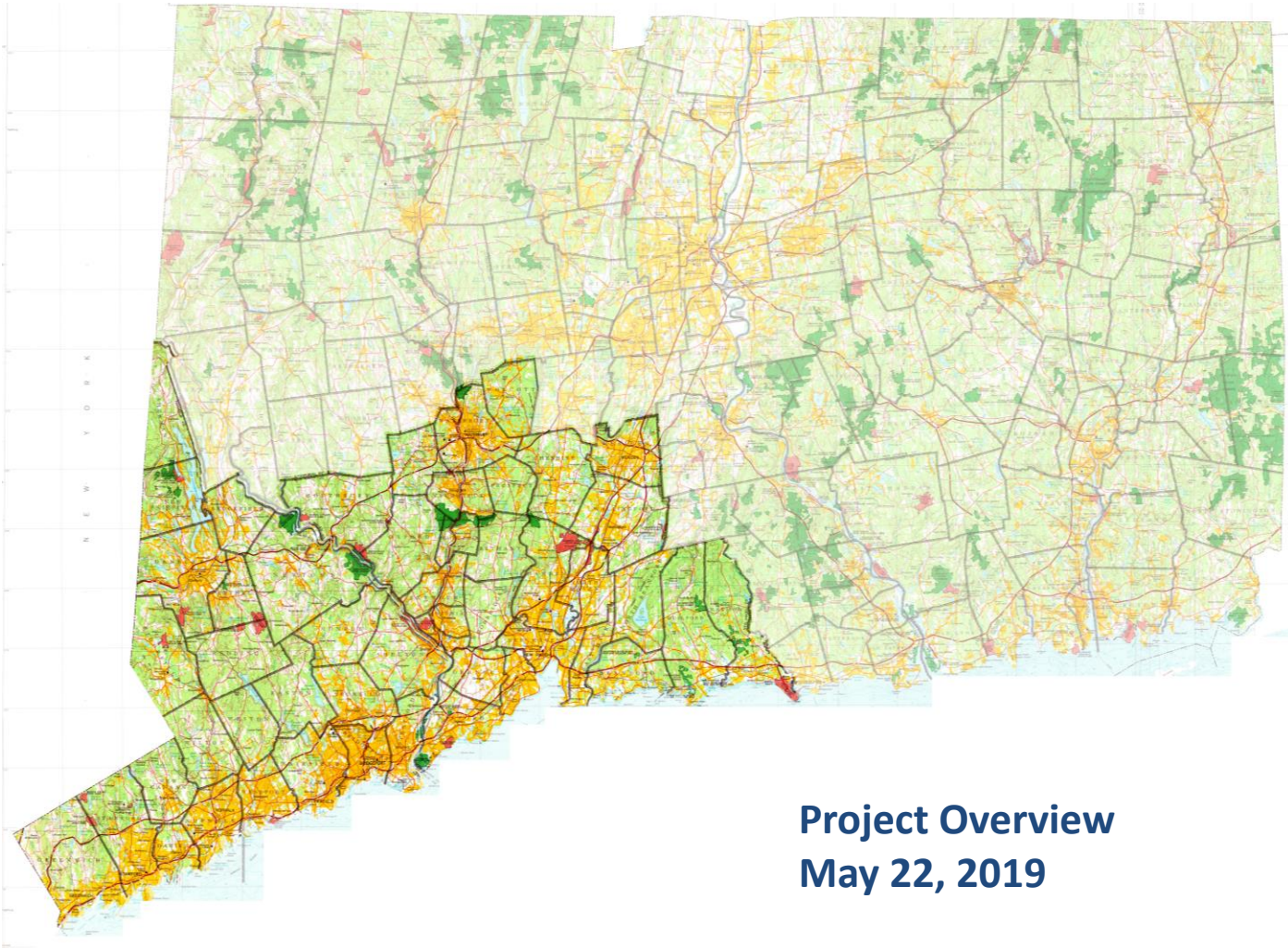


Resilient Connecticut



Project Overview
May 22, 2019

UConn



HUD National Disaster Resilience Competition

CIRCA partnering with State Agencies Fostering Resilience (SAFR Council)



UConn



CIRCA Staff



James O'Donnell
Executive Director,
Professor, Marine Sciences



John Truscinski
Director of Resilience Planning



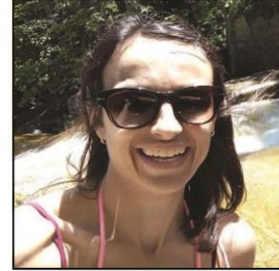
Katie Lund
Project Coordinator



Alexander Felson
Deputy Executive Director
Director of Resilience Design



Yaprak Onat
Assistant Director of Research



Caterina Massidda
Data Analyst/Programmer



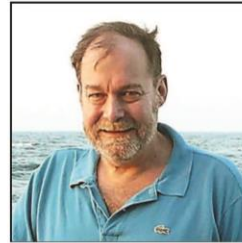
Lauren Yaworsky
Program Assistant



Kimberly Bradley
Project Specialist



Kay Howard Strobel
Observations



Grant McCardell
Modeling



Todd Fake
Modeling



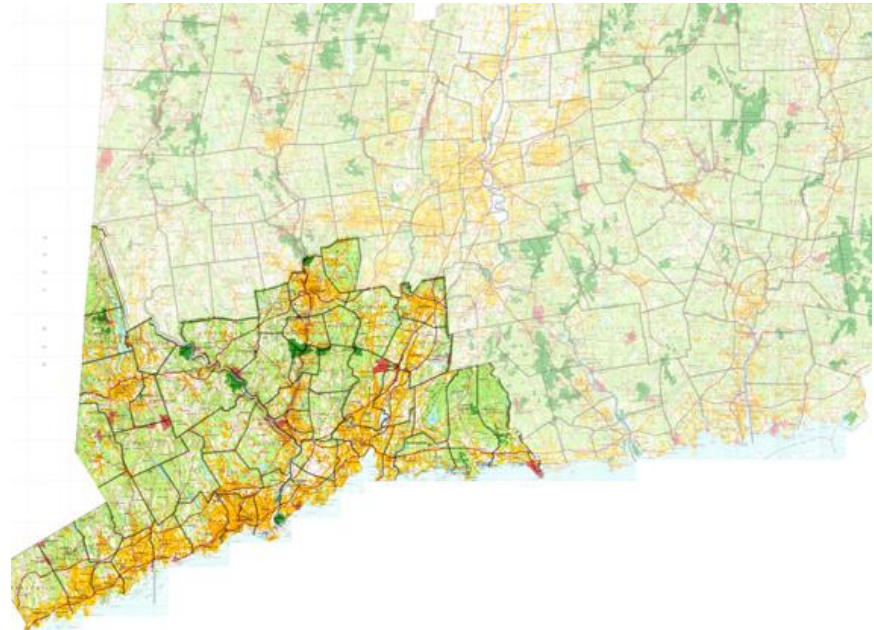
Molly James
Observations



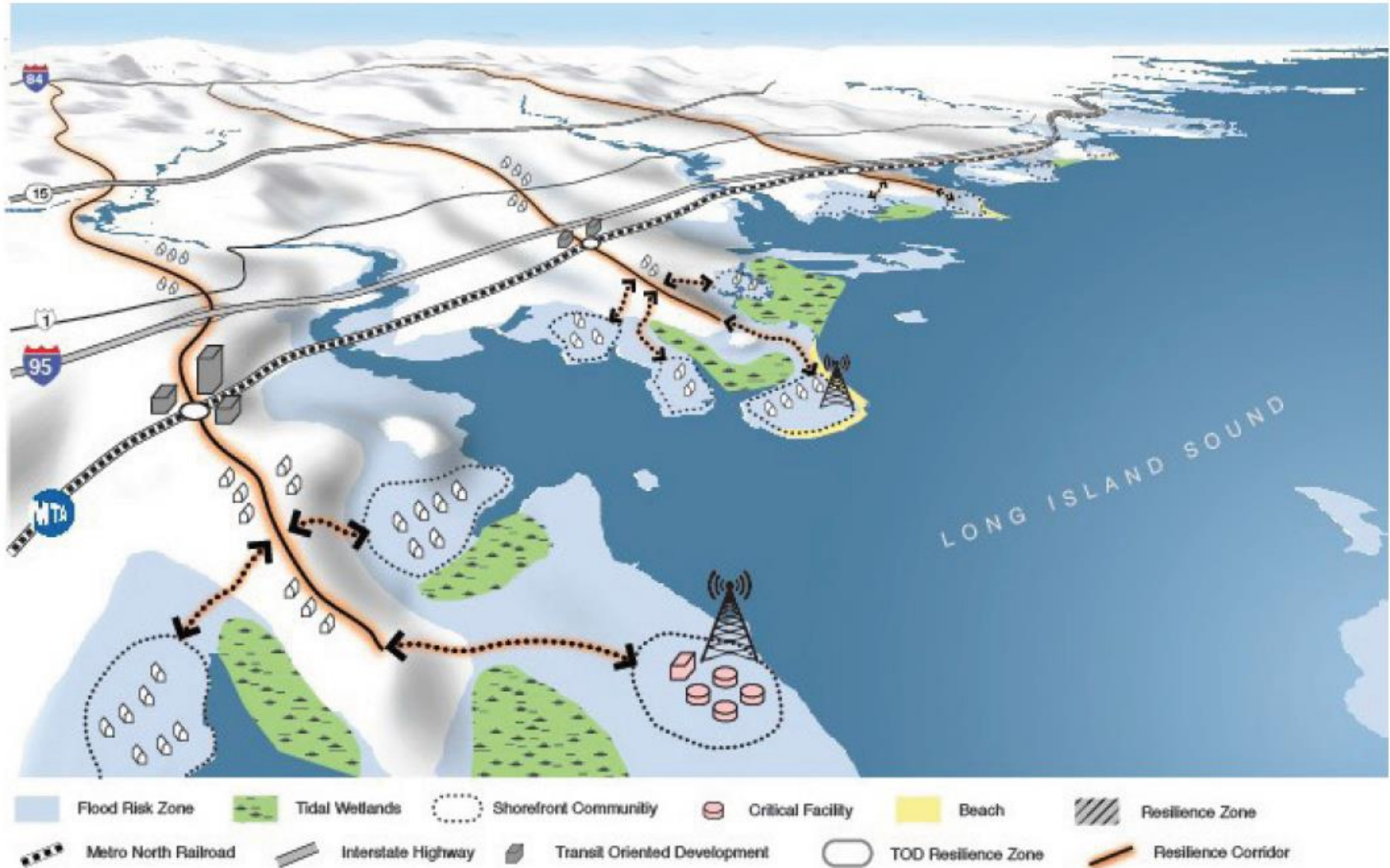
Amin Ilija
Modeling

Resilient Connecticut

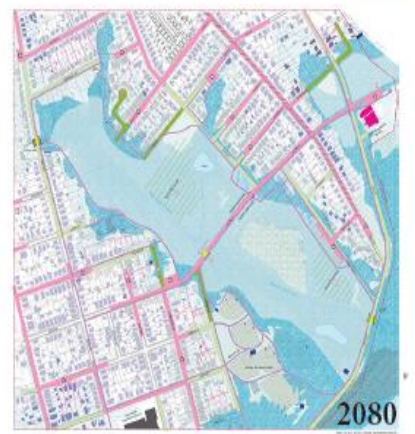
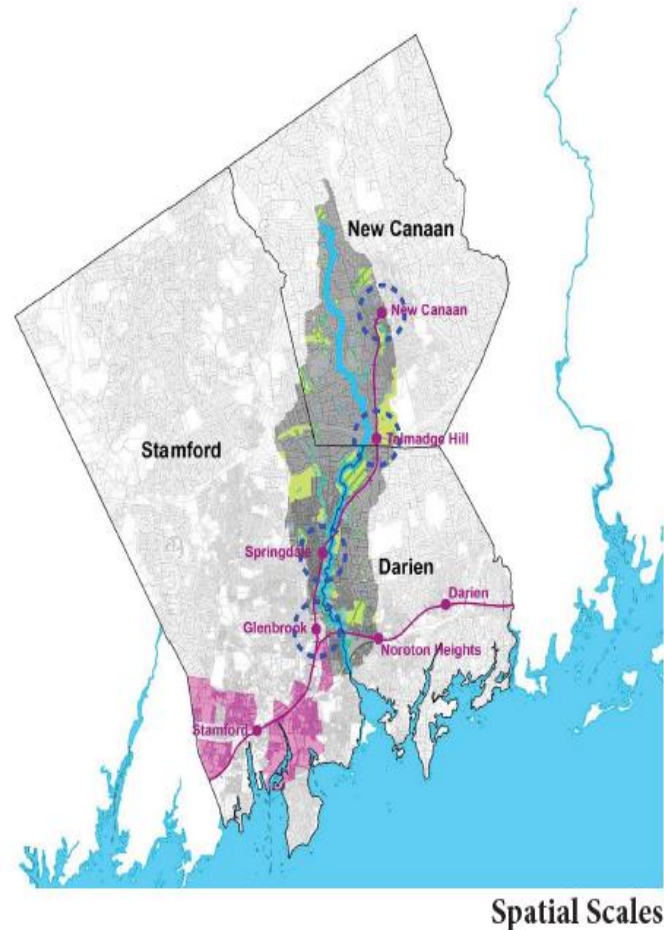
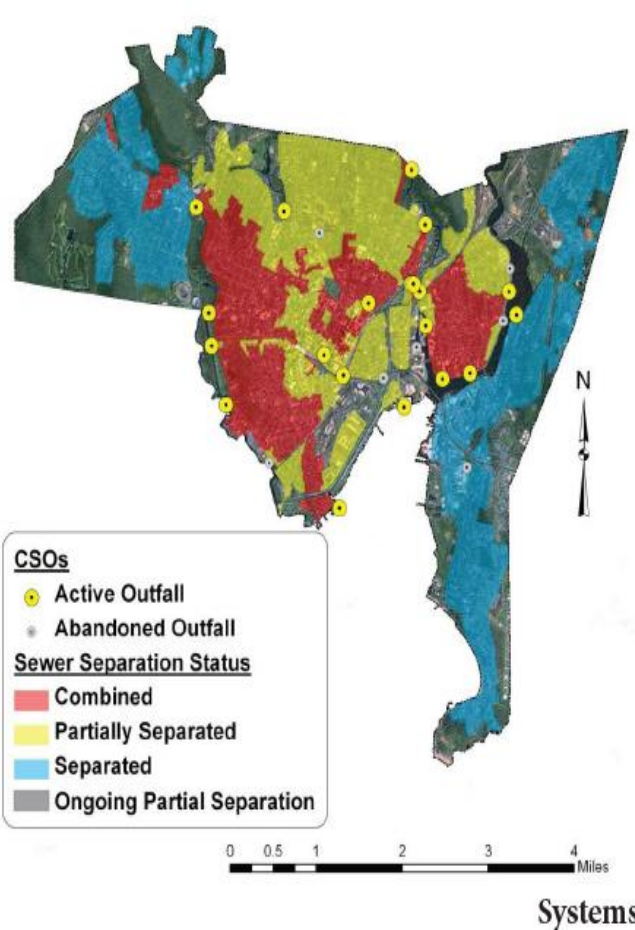
- Establish resilient communities through smart planning.
- Incorporate economic development framed around resilient transit-oriented development.
- Incorporate conservation strategies, and critical infrastructure improvements.



Resilient Connecticut - Planning



Regional Scale Analysis



Temporal Scales

Resilient Connecticut - Project Phases

Oct 2018 – May 2022

Phase 1:
*Develop Resilience
Planning Framework*

- Coordinate with State Agencies (SAFR) and stakeholders
- Review existing local, state, and relevant national and international resilience and adaptation planning efforts
- Draft Resilience Framework

Phase 2:
*Conduct Resilience
Planning in New Haven
and Fairfield Counties*

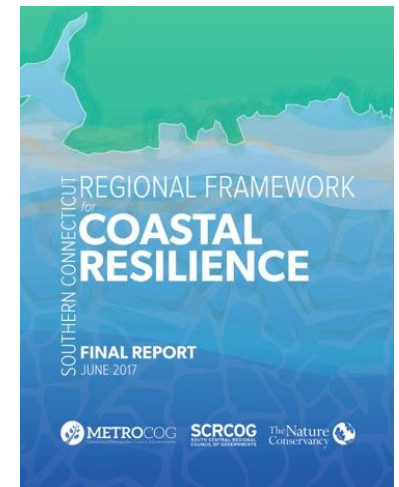
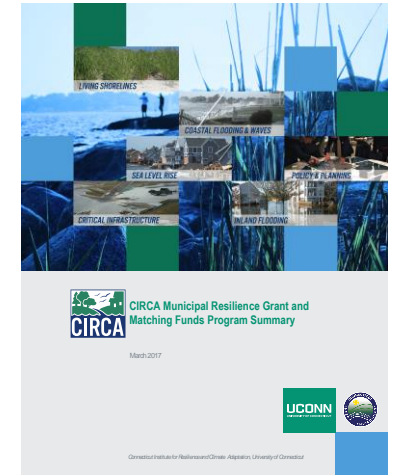
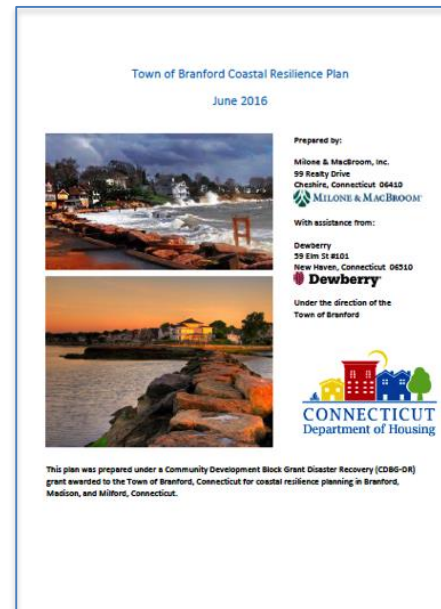
- Regional resilience planning incorporating the Resilience Framework
- Municipal resilience planning activities incorporating the Resilience Framework
- Regional engagement; coordination across plans and initial synthesis

Phase 3:
*Synthesize, prioritize
and develop
implementation plans*

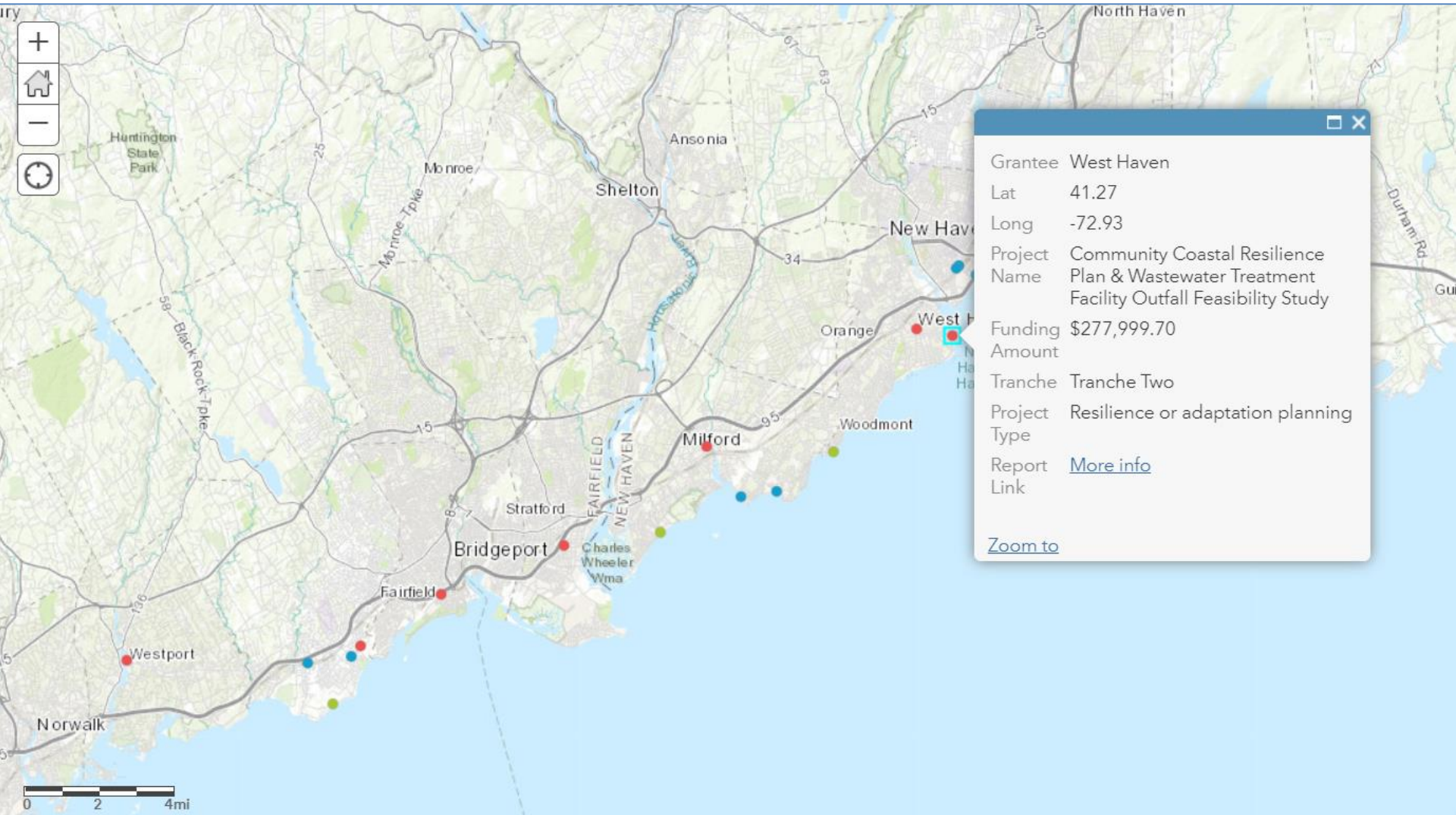
- Site plan development
- Synthesis report and Resilience Roadmap
- Funding site plan projects

Phase 1: Develop Resilience Planning Framework

- Bring together the stakeholders;
 - State Agency Workgroup and Resilient Connecticut Framework Advisory Committee
- Assess the current planning efforts in the state; and
- Build a resilience framework for planning efforts going forward



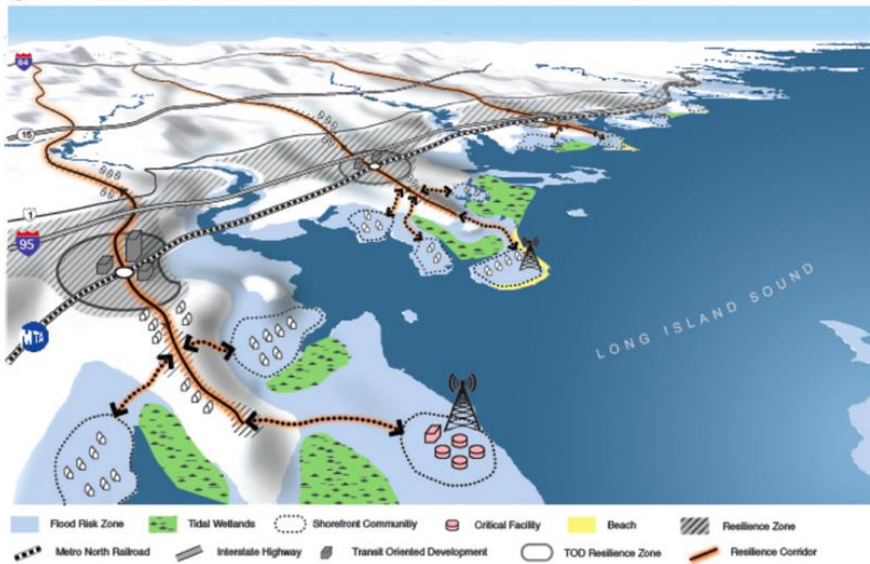
CDBG-DR Projects



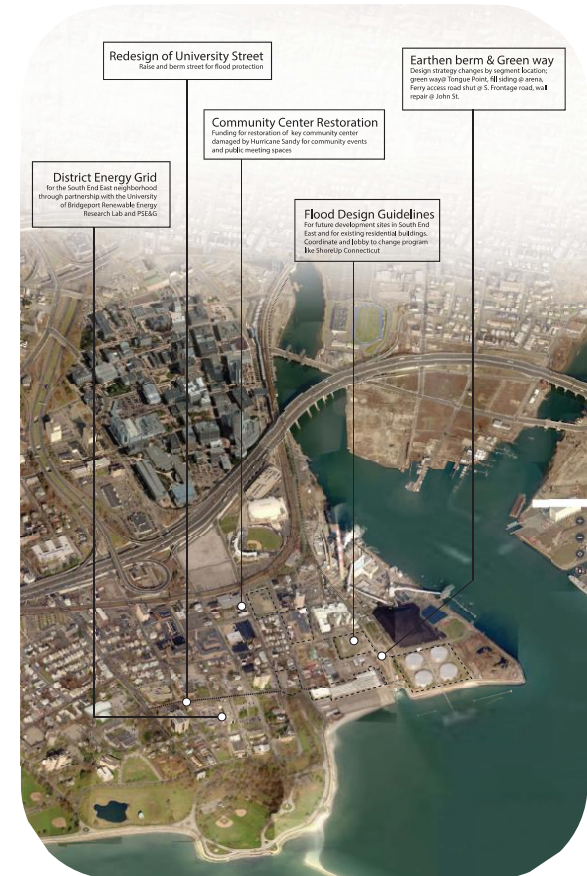
	New Haven County	Coastal Resilience Plan	Plan of Conservation and Development	Municipal Natural Hazard Mitigation Plan	COG Natural Hazard Mitigation Plan	Floodplain Management Plan	The Nature Conservancy Regional Framework
25							
26	Ansonia		2018				
27	Beacon Falls		2013	2009			
28	Bethany		2010		SCRCOG - 2018		
29	Branford	2016	2019		SCRCOG - 2018		2016
30	Cheshire		2016	2008			
31	Derby		2016				
32	East Haven		2019	2012	SCRCOG - 2018		2016
33	Guilford	2014	2015	2012			2016
34	Hamden		2019 (update in progress)		SCRCOG - 2018		
35	Madison	2016	2013		SCRCOG - 2018		2016
36	Meriden		2009				
37	Middlebury		2015	2009			
38	Milford	2016	2012	2013	SCRCOG - 2018	2014 (Community Rating System Maintenance and Improvement Plan)	2016
39	Naugatuck		2013	2013			
40	New Haven		2015 (comprehensive plan)	2017	SCRCOG - 2018		2016
41	North Branford		2009		SCRCOG - 2018	2017 (stormwater management plan)	
42	North Haven		2017		SCRCOG - 2018		
43	Orange		2015		SCRCOG - 2018		
44	Oxford		2018	2006			
						2017 (stormwater	



Phase 2: Conduct Resilience Planning in New Haven and Fairfield counties



- Regional
- Municipal
- Regional engagement, coordination across plans and initial synthesis

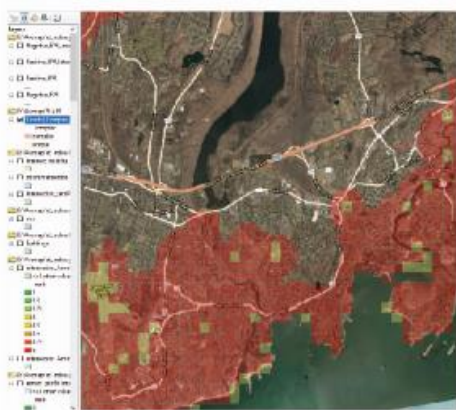


Phase 3: Synthesize, prioritize and develop implementation plans

- Site plan development
- Funding site plan projects
- Resilience Roadmap Recommendations



Rebuild by Design Illustrative plan of South End showing catalytic development potential and NDRC Projects



Modeling Analysis



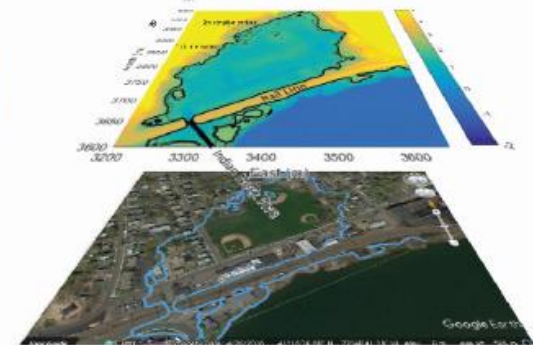
Map Viewer



Field Research



Planning



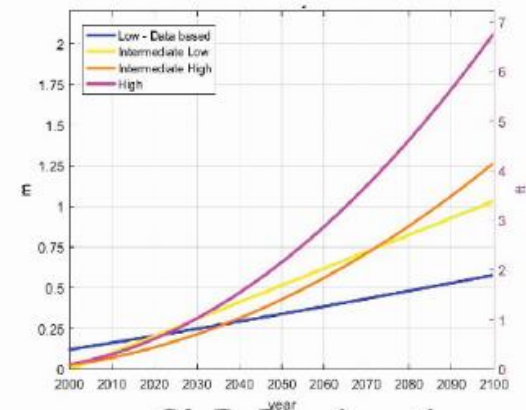
Technical to Planning



Education

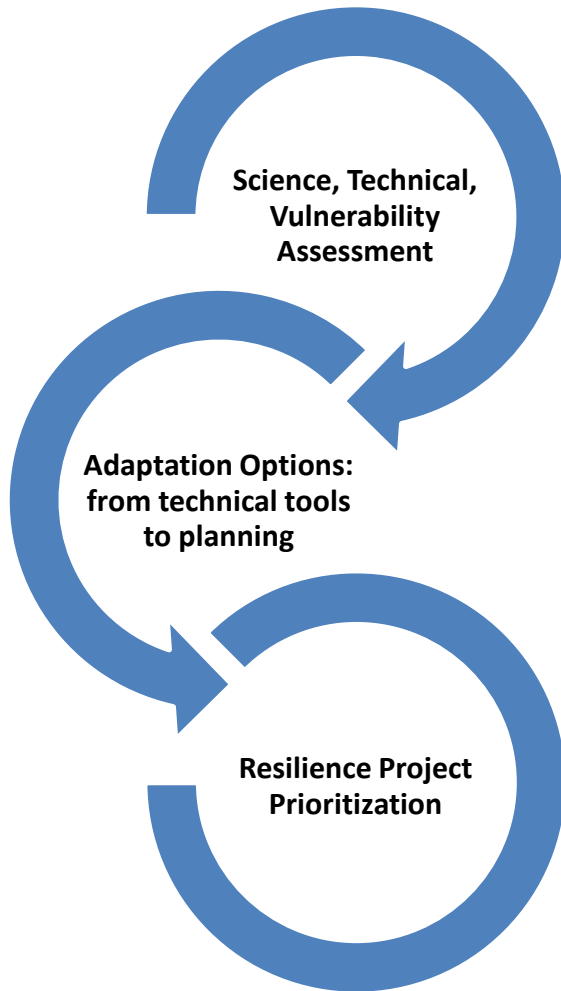


Site Reconnaissance



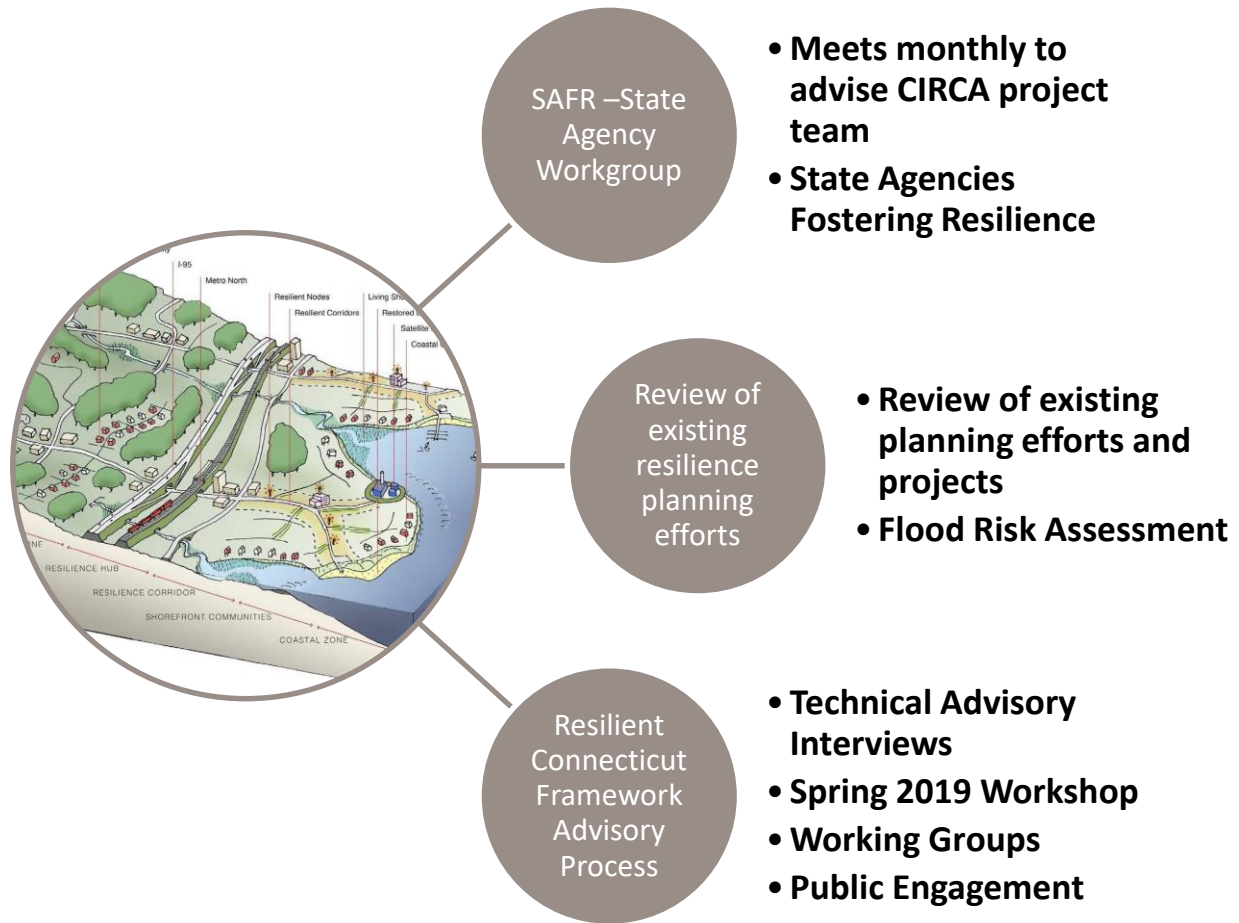
SLR Projections

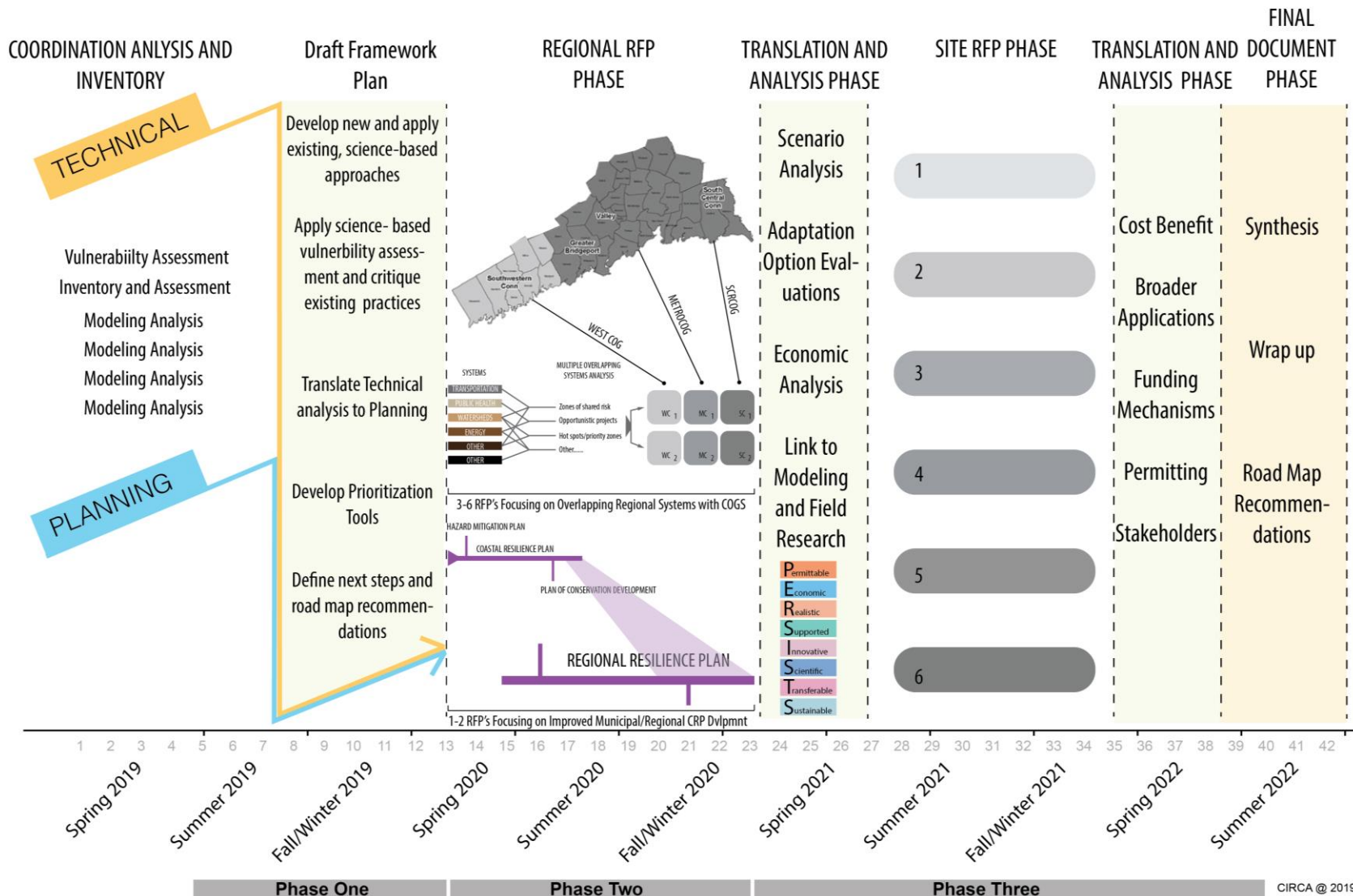
Resilient Connecticut Planning Framework



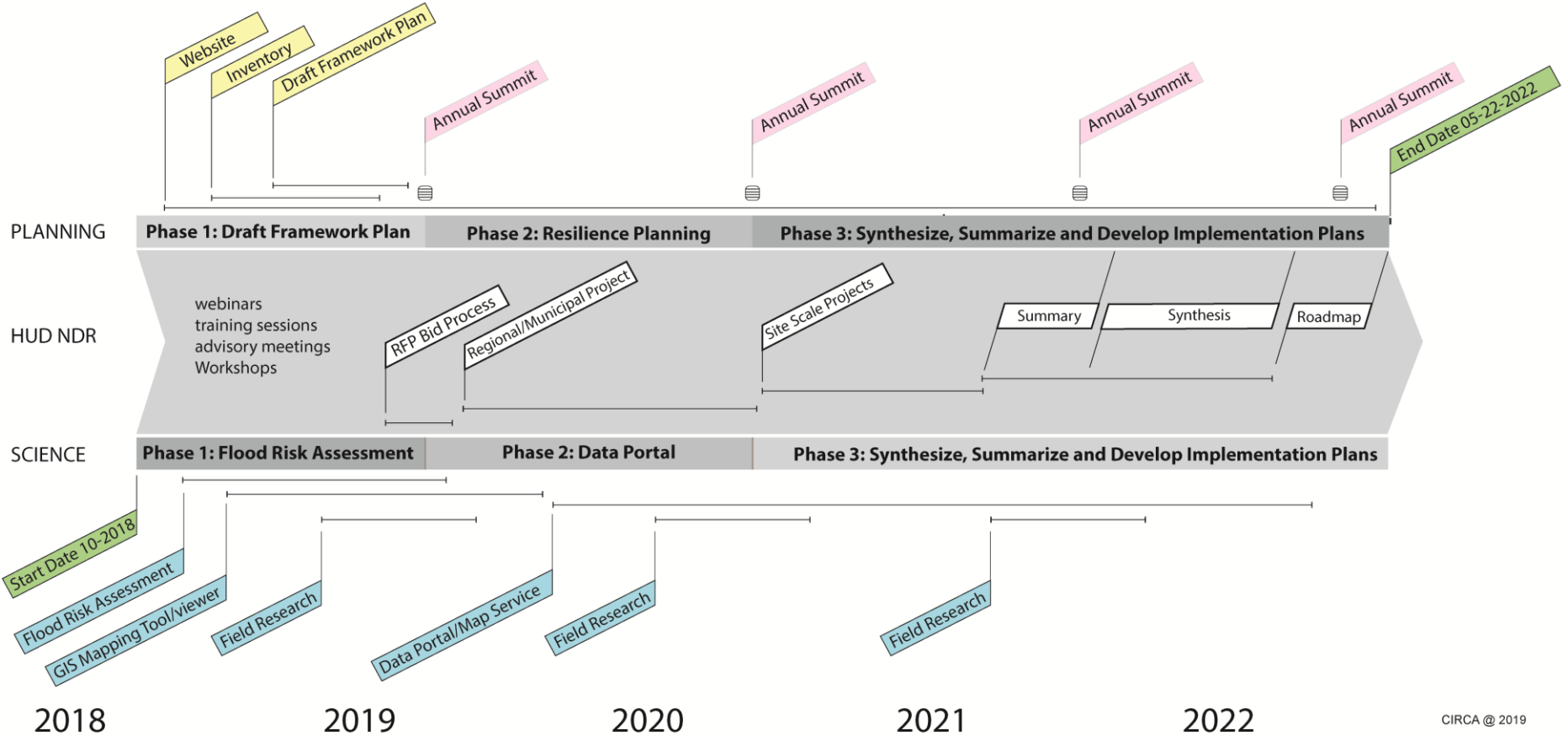
- Inform scope and deliverables of Phase II Regional Plans
- Inform process for identifying site scale projects in Phase III
- Inform focus areas for CIRCA research and capacity building
- Guide RFP process for Phases II and III

Framework Development Process





RESILIENT CONNECTICUT– Project Timeline



CIRCA @ 2019



resilientconnecticut.uconn.edu

UConn | UNIVERSITY OF CONNECTICUT

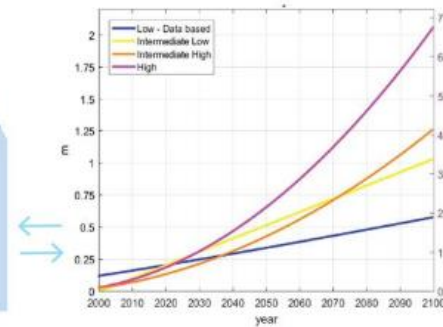
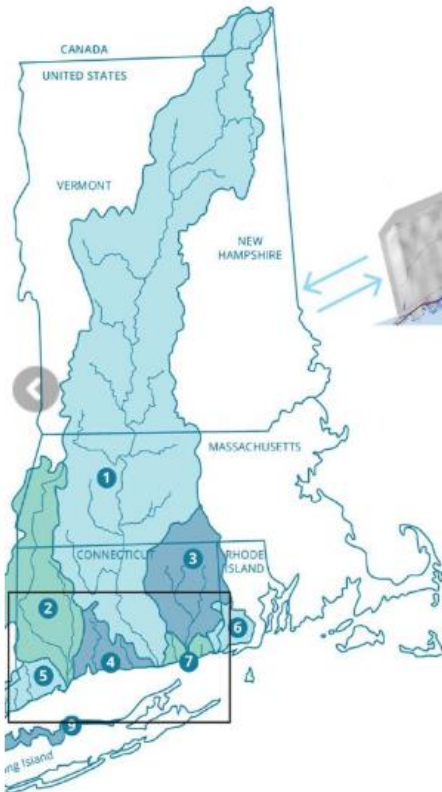
Q A-Z

CONNECTICUT INSTITUTE FOR RESILIENCE & CLIMATE ADAPTATION (CIRCA)

Resilient Connecticut

Search this site...

[Home](#) [Planning Tools](#) [Technical Tools](#) [Field Research](#) [Engagement](#) [About](#) [Announcements](#) [Contact Us](#) [CIRCA](#)



Resilient Connecticut

Engagement & Outreach



Advisory Groups

Groups will include a State Agency Workgroup, a Resilience Framework Advisory Committee, and Technical Advisors as needed throughout the project.



Events

Events will be hosted regularly throughout the project and include workshops, annual summits, Innovative Design Trainings, Engineering for Coastal Resilience Trainings, and a monthly webinars between events.



Website

This new Resilient CT website will have content targeted primarily to technical audiences (engineers, COGs, town and state agency staff) and will contain background on the project, engagement opportunities, references/resources, and planning tools



Social Media

CIRCA will use their existing Resilience Roundup Newsletter, CIRCA Announcements, and Twitter accounts.



e-Mail List

SIGN UP NOW



READ THE ROUNDUP