

Resilient Connecticut 2.0 Phase II

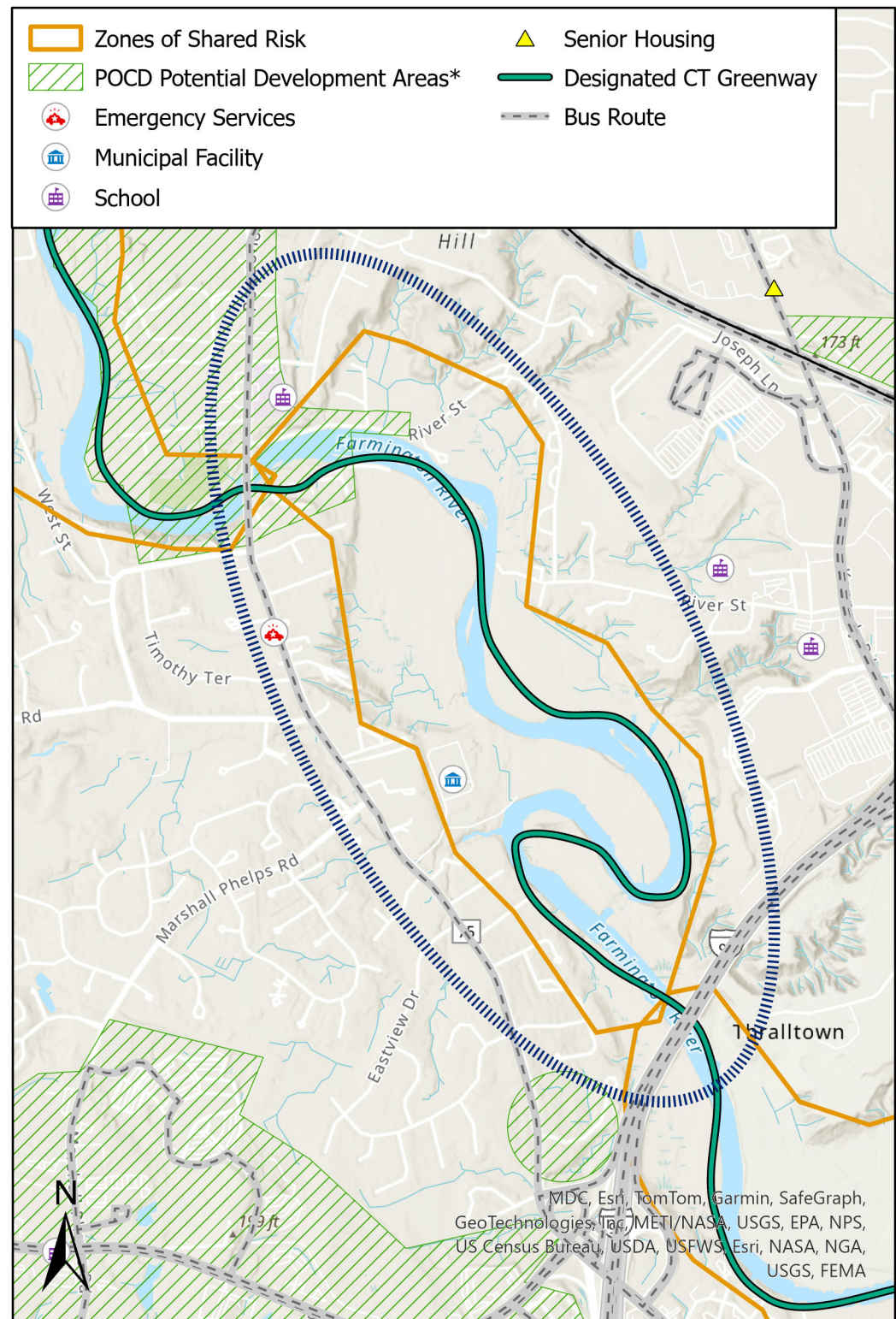
Regional Adaptation/Resilience Opportunity Areas

Name: Poquonock Avenue and Farmington River
Location: Windsor

Consideration	Characteristics of Area				
Flood Vulnerability	●	●	●		
Heat Vulnerability	●	●			
Social Vulnerability	●	●	●	●	

This ROAR captures the point at which the Farmington River crosses Poquonock Avenue (Rt 75), as well as a subsequent stretch of the Farmington River. The 1% annual chance flood zone associated with the Farmington River covers a broad swath of this ROAR, and approaches the Poquonock Water Pollution Control Facility. The broader area is characterized by moderate flood and heat vulnerability as well as high social vulnerability.

- Poquonock Fire Station
- Poquonock Water Pollution Control Facility - MDC
- Poquonock Elementary School
- Lower Farmington River Greenway



*Areas identified in POCDs as supporting development, redevelopment, or other types of economic activity