






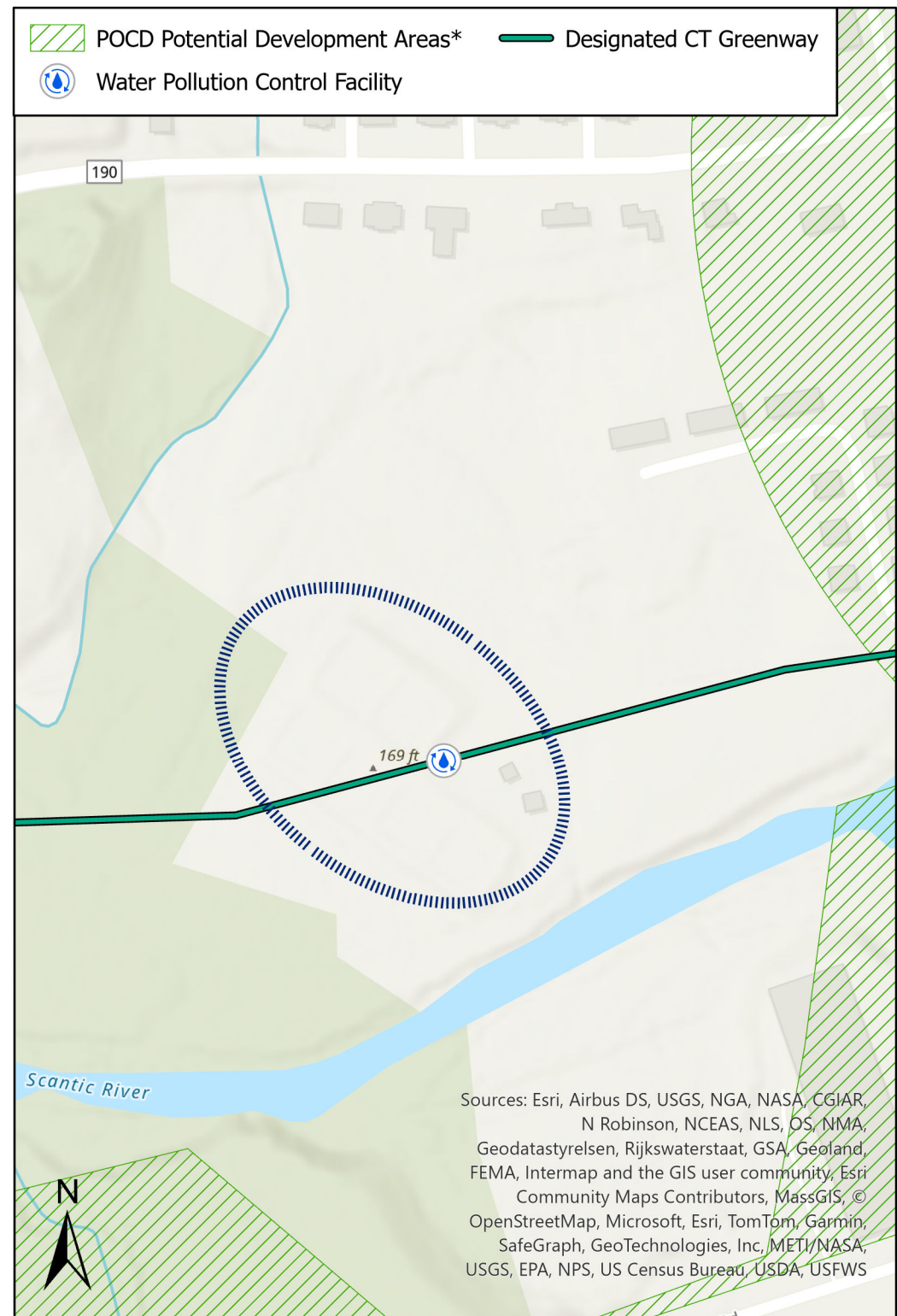
# Resilient Connecticut 2.0 Phase II

## Regional Adaptation/Resilience Opportunity Areas

Name: Somers Water Pollution Control Facility

Location: Somers

Consideration	Characteristics of Area				
Flood Vulnerability					
Heat Vulnerability					
Social Vulnerability					
<p>Unlike some of the larger ROARs identified through the Resilient Connecticut program, this site was selected because an individual critical facility is located in an area of vulnerability; in this case, the Somers Water Pollution Control Facility is located within the 1% annual chance flood zone associated with the Scantic River. Flood-related impacts to this facility could hinder its ability to serve the sewershed. The wider area is characterized by relatively low heat and social vulnerability.</p>					
<p>Somers Water Pollution Control Facility Scantic River Park</p>					



\*Areas identified in POCDs as supporting development, redevelopment, or other types of economic activity