

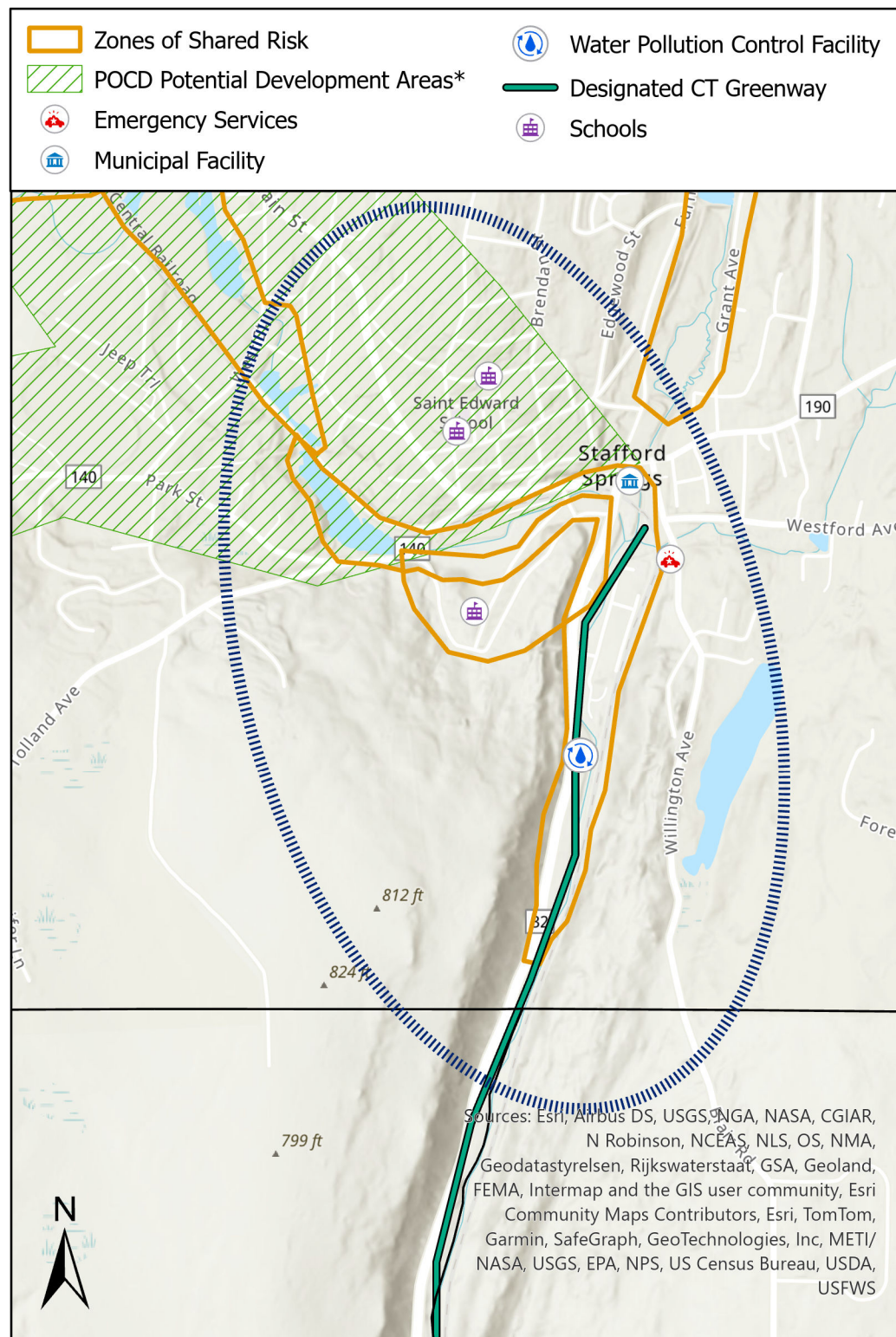
Resilient Connecticut 2.0 Phase II

Regional Adaptation/Resilience Opportunity Areas

Name: Stafford Springs

Location: Stafford

Consideration	Characteristics of Area				
Flood Vulnerability	●	●	●		
Heat Vulnerability	●	●			
Social Vulnerability	●	●	●		
<p>The Willimantic River intersects with Ginger Brook and flood zones associated with the Rhode Island Mill Ponds in the Stafford Springs section of the Town of Stafford. Multiple critical facilities are located in Stafford Springs, including the Town Hall, a fire station, and the town's Water Pollution Control Facility. The broader area is characterized by moderate flood, heat, and social vulnerability.</p>					
<p>Warren Memorial Town Hall Stafford Fire Dept Station 245 Stafford Water Pollution Control Facility Borough Elementary School Willimantic River Greenway</p>					



*Areas identified in POCDs as supporting development, redevelopment, or other types of economic activity