

SWIFT

A Hub for Economic and Climate Resilience





**NORTH
HARTFORD
PARTNERSHIP**

NHP works with the community to advance economic development, provide and promote clean energy investments, empower residents to access clean energy benefits, and improve health and housing conditions for the North Hartford community.

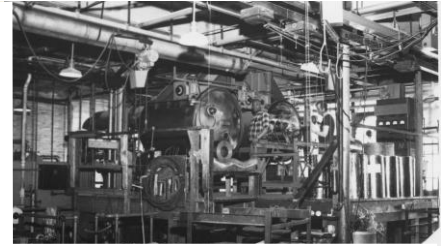
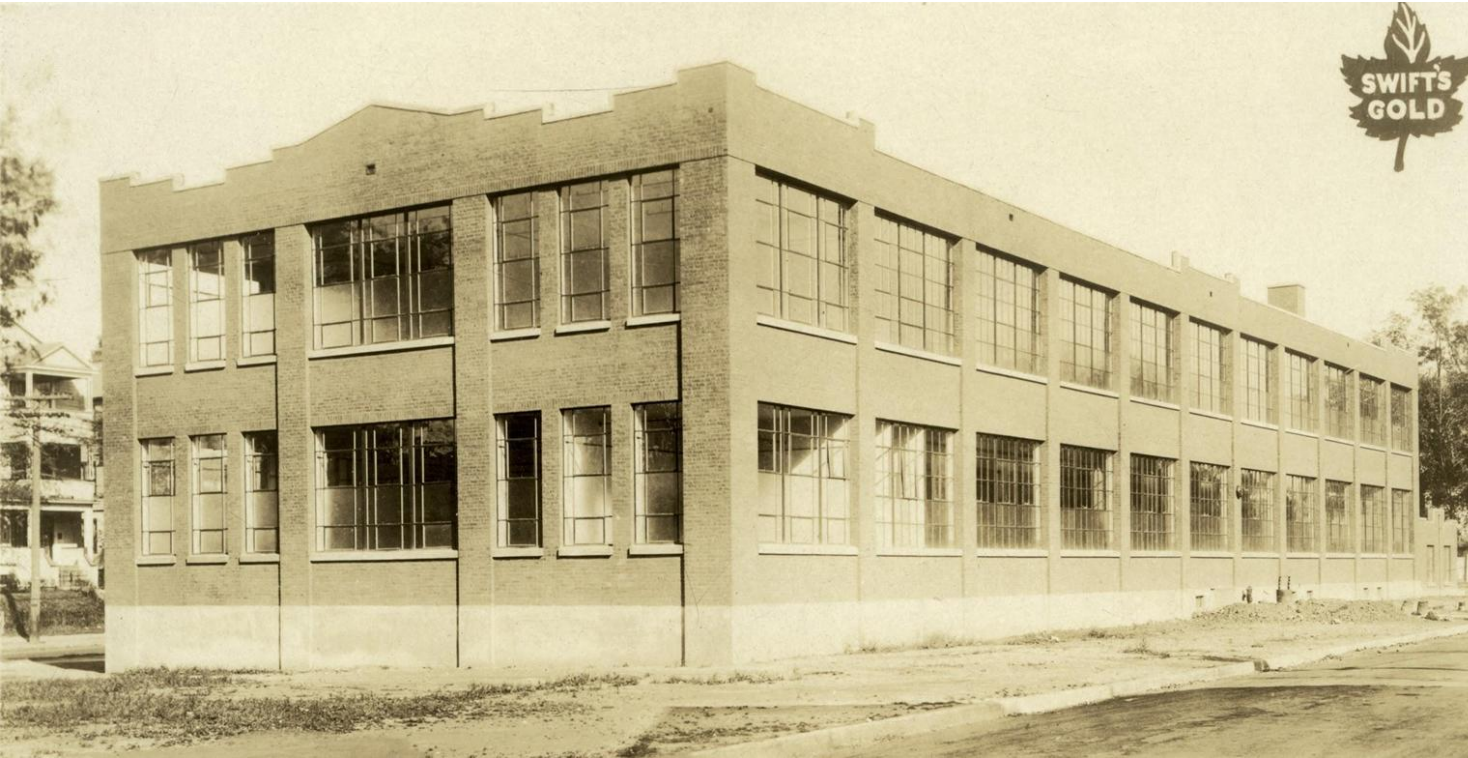
North Hartford

Comprised of 3 historic neighborhoods (Upper Albany, Clay Arsenal & Northeast) 700acre park, within walking distance of downtown Hartford, which includes many anchor institutions as well as the Connecticut state capitol.



Swift Factory

Founded in 1887, closed in 2005 following 5 generations in the Swift family. Once the largest gold leaf manufacturer in the world, employing over 300 people. Donated to North Hartford Partnership in 2010.



Swift Factory.

A collection of 5 connected factory buildings and 2 historic homes on a 2.6 acre site, in a residential neighborhood. All buildings are listed on the State & National Register of Historic Places.



Initial Neighbour Survey

NHP conducted a survey asking 5 simple questions to community residents.

Top Concerns About Neighborhood

- Public Safety
- Jobs
- Youth Engagement

Top Ideas for Swift Factory

- Jobs
- Recreation Center
- Activities for Youth
- Daycare
- Education/Training
- Small Businesses



Swift Factory: Revitalization

In the fall of 2020, NHP completed construction on a \$35M rehabilitation of the historic Swift Factory in the heart of the North Hartford. Anchor tenants will create more than 150 long term jobs (targeted to local residents).

Swift by the numbers:

Total Project Cost
\$35M
Completed
Fall 2020
Female & Minority
Construction Hours 63%
Hartford Resident
Construction Hours 33%

Occupancy

Black Run Business 92%
Women Run Business 54%
Kitchen Space 100% leased
Office Space 92% leased

Future Tenants



Swift Tenants

CURRENT TENANTS

FUTURE TENANTS/USES

Blessed Kitchen
Anthony's Catering
Sienna Cakery
Ovelle Coffee
Rasta Rant

KPSP
Pops Guac
PorkyPig BBQ
Time Warp

NE Video
Harriott Home Health
Hartford Health Initiative
Hartfords Proud
North Hartford Partnership

MCM Plumbing
An Accurate Accounting
Sound Waves
Elite Legacy Realty
Fresh Start Ministries

BUILD A BETTER YOU

GARDENERS TO FARMERS

SWIFT KITCHENS

SWIFT OFFICES

COMMUNITY FIRST SCHOOL

CREC HEAD START

CREC EXPANSION

AVAILABLE SPACE

WORKFORCE DEVELOPMENT

North Hartford Housing Trust

To address housing stability NHP created the North Hartford Housing Trust with a goal of fostering housing stability, local ownership of housing and creating healthier, safer and more energy efficient living conditions in North Hartford.



The North Hartford Housing Trust (NHHT) owns 18 rental units and is raising funds to grow to 100 rental units across the North Hartford.

Apartments are rented at affordable prices not to exceed 50% AMI.

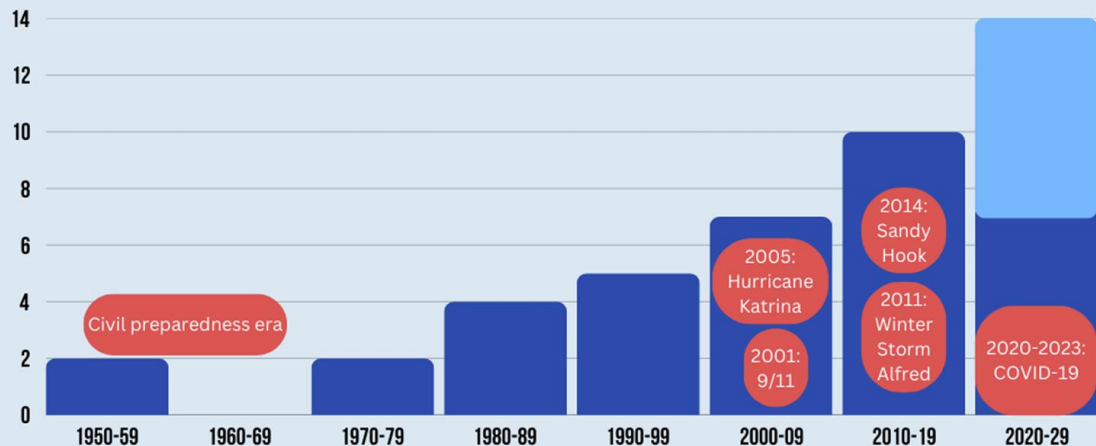
Local contractors are hired to do repairs and maintenance.

NHHT is governed by a local Board of Directors, which is composed of building residents and, community stakeholders.

Energy & Resilience Hub

A resilience hub provides everyday services that supports residents before, during, and after emergencies. Hubs connect people to resources, foster community connections, and enhance a community's ability to withstand disruptions & disasters.

The number of disasters, both social and environmental, has been increasing over the last 70+ years. A few key moments have had drastic impacts on emergency management in Connecticut and the US.



A trusted community space that activates during emergencies

Provides safety, support, and essential services

Helps neighbors during:

- ⚡ Power outages
- 🔥 Extreme heat/cold
- 🏠 Flooding
- ⚠️ Other local emergencies

Number of times FEMA declared disasters in CT in a decade (from CT-FEMA)

2020-25 has had 7 declared disasters. Based on the previous decades, 14 are projected by the end of the decade.

Major events referenced by CT Emergency Management Directors for impacting how the plan for disasters

Energy & Resilience Hub in Action

- Currently fundraising to retain a planning consultant.
 - 18-24 month Climate Resilient Hub Planning for Hartford, New Haven and Bridgeport
 - Emergency Planning and Preparedness
 - Community engagement
- Community Composting initiatives.
 - Commercial and Residential Composting began in 2024
 - Dumping watchdog
- Sustainability and Healthy Homes Exposition.
 - Held in 2024, planning for April 2026
- Solar, Microgrid and Geothermal planning and development.
 - When funding becomes available, solar at residential properties and microgrid at Swift
 - Beginning in 2024, Geothermal education, coalition and campaigning



Join Us for a Discussion for a Potential Swift Factory Resilience Hub!

The Swift Factory
10 Love Lane, Hartford, CT



October 16 2025 • 9:30am - 12:00 pm

Agenda

- 9:30-9:45: Introduction to the Resilience Hub Concept
John Truscinski, CIRCA
- 9:45-10:00: Vision for Swift Factory as a Resilience Hub
- Brenda Watson, North Hartford Partnership
- 10:00-11:00: Open Discussion with Guiding Questions
 - Emergency operations and resilience
 - Community programming for blue sky days
- 11:00 - 11:30: Report out and larger group discussion
- 11:30 - 11:35: Wrap up and Next Steps

Factory - Patrick

provided by



SWIFT

SUSTAINABILITY EXPO

THE CONNECTICUT CONVENTION CENTER
SATURDAY APRIL 11th, 2026 10 AM - 4 PM

CALLING ALL VENDORS!

We're inviting businesses, artisans, and entrepreneurs to showcase their products and services at our upcoming event!

- ✓ Renewable Industries
- ✓ Home & Lifestyle Products
- ✓ Food & Beverage Brands
- ✓ Business & Service Providers

REGISTER NOW 860.404.9829 www.swiftfactory.org

Energy & Resilience Hub in Action

Community Composting - funded by UCONN CIRCA

- Established a **fully-funded composting program** through a **UCONN CIRCA grant**, ensuring continued waste reduction and environmental benefits for the community. Following **metrics demonstrate a triple win**: immediate local benefits, direct climate action, and progress toward a low-carbon community.
- Diverted over **2 tons of waste** from landfills, turning **4,706 pounds** of organic material into nutrient-rich compost instead of greenhouse gases.
 - Reducing Local Pollution:** Preventing this organic material from ending up in a landfill or incinerator, which would release methane (a potent greenhouse gas) and other pollutants directly into the air.
 - Claiming Local Control:** It's a form of self-determination, taking control of a waste stream and turning it from a problem into a resource.
- Achieved a **significant environmental impact**, equivalent to eliminating the CO₂ emissions from 1,111 miles driven by a car or charging 54,000 smartphones.
 - Climate change can feel abstract.** Communicating the avoided methane emissions, these metrics translate the action of composting into immediate, understandable equivalents. As the NHartford community that experiences 2x higher asthma rates than any other CT zip code
 - The climate crisis was not created equally by all, but J40 communities often bear the heaviest burdens. **This program demonstrates we are active leaders in the solution, mitigating a problem we did not create.**



Sustainability Expo & UCONN CIRCA

Swift has hosted a number of community sustainability & resilience events including our 2024 Sustainability Expo, and community resilience workshop in collaboration with UCONN



www.northhartfordpartnership.org

www.swiftfactory.org

IG : [@swiftfactoryhartford](https://www.instagram.com/swiftfactoryhartford)

[@northhartfordpartnership](https://www.instagram.com/northhartfordpartnership)

FB: [@HartfordSwiftFactory](https://www.facebook.com/HartfordSwiftFactory)

[@NorthHartfordPartnership](https://www.facebook.com/NorthHartfordPartnership)

Thank You

