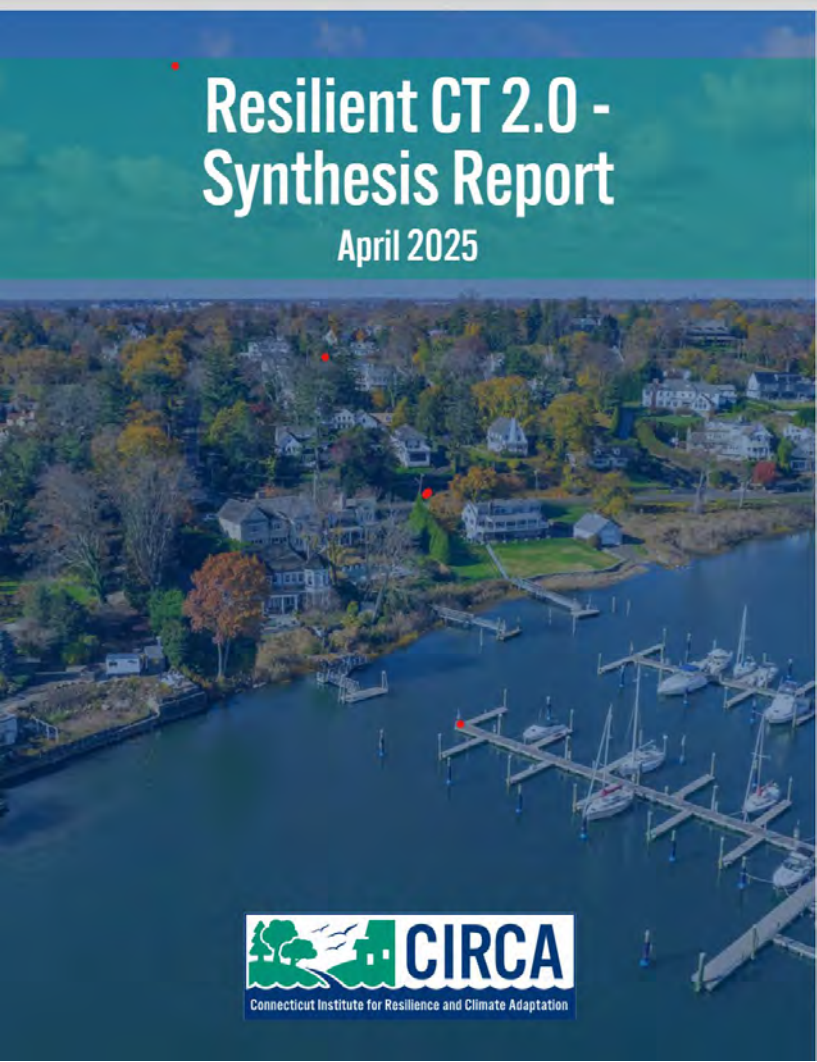


# CIRCA SUMMIT 2025

Jim O'Donnell,

Executive Director, CIRCA  
Professor, Department of Marine Sciences

Thursday Nov. 13th, 2025



**4. Phase III Summary:** ..... 19

**4.1 Resilient East Haddam** ..... 19

**4.2 Resilient Jewett City** ..... 21

**4.3 Resilient Portland** ..... 22

**4.4 Resilient Stonington Mystic** ..... 23

**4.5 Resilient Yantic River – Norwich, Bozrah, and Franklin** ..... 25

**4.6 Resilient East Hartford** ..... 27

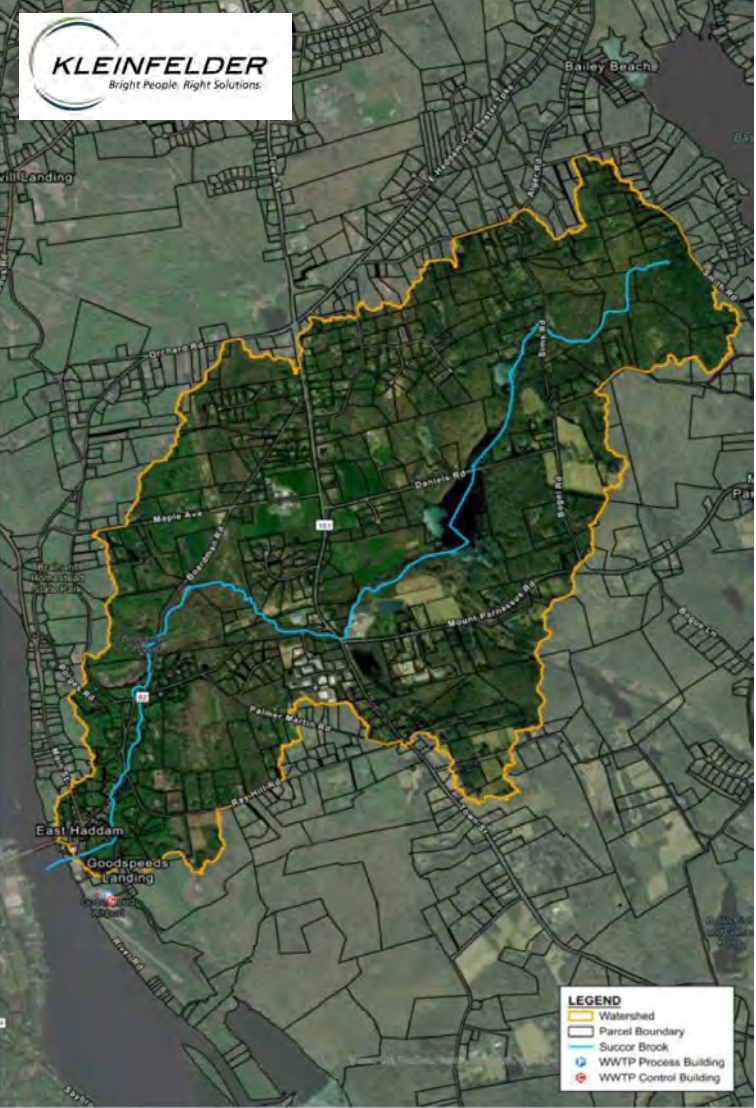
**4.7 Resilient Piper and Webster Brooks – Newington, Berlin, and New Britain** ..... 28



# EAST HADDAM



First Resilient East Haddam Public Workshop



Hydrologic Study Area Overview

Restored Stream with Rehearsal Space Removed

Before



After





# Yantic River/Norwich, Bozrah, Franklin

## Highlights of this project

- Multiple Towns
- Coordination with SEC
- Quick Response

Jan. 10, 2024, 12:18 p.m. ET



A Backus Hospital van submerged in the Yantic River behind the William W. Backus Hospital in Norwich after flooding Wednesday.

John Shishmanian/For The Bulletin

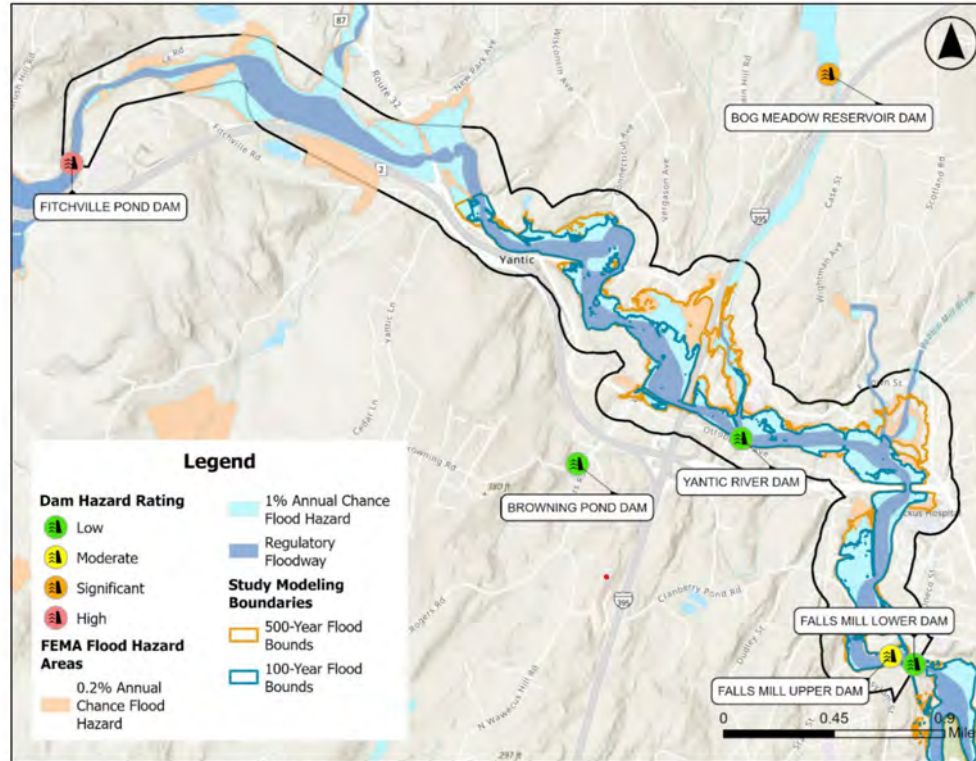
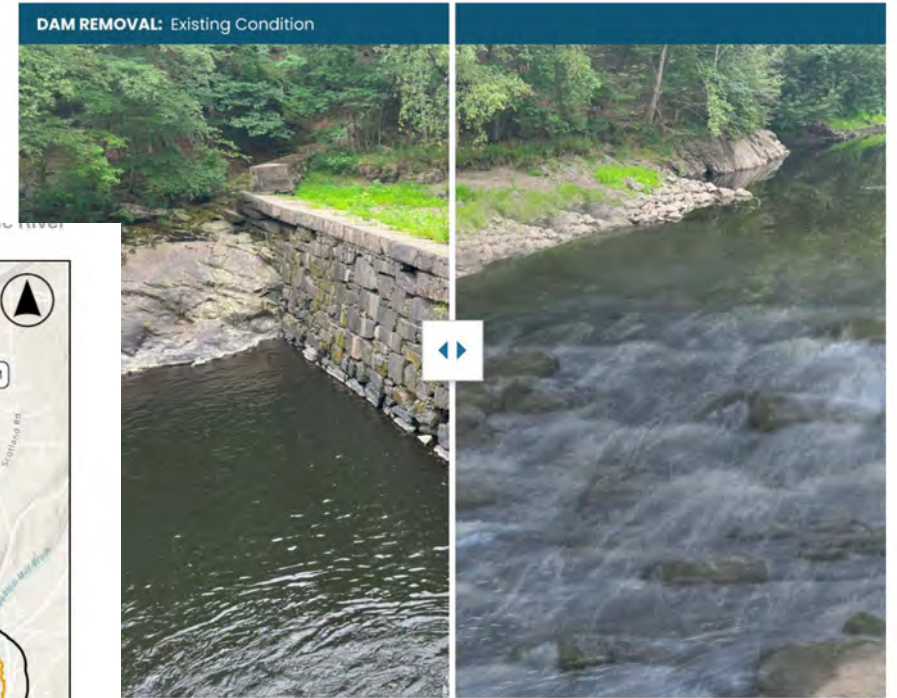


Figure 14: Regional Dams, FEMA and Study Model Floodplains



## Recommended Interventions:

- removing the Upper Falls Dam
- widening the river channel
- implementing managed retreat

<https://resilientconnecticut.uconn.edu/zoning/>

### Climate Resilient Zoning For Municipal Land Use Commissioners Training

In 2021, the Connecticut legislature passed Public Act 21-29 which included a requirement for land use boards to attend four hours of training every two years starting in 2023. CIRCA has created three online training modules on zoning policies that can be adopted to increase municipal climate resilience and together will fulfill one hour of the training requirement. The modules can be accessed below.

If a commission would like to have a live, online or in-person presentation of these materials, please contact [circa@uconn.edu](mailto:circa@uconn.edu).

[MODULE 1: CLIMATE  
CHANGE IMPACTS ON  
CONNECTICUT](#)

[MODULE 2: RESILIENT  
ZONING TO ADDRESS  
CLIMATE VULNERABILITIES](#)

[MODULE 3: ZONING TOOLS  
TO ADDRESS CLIMATE  
VULNERABILITIES](#)

### Zoning Fact Sheets

Examples of zoning policies municipalities could modify and/or adopt to enhance local climate resilience are linked in the adjacent boxes. Where applicable, model ordinances and examples of where the policies have been adopted are included. Check back as more fact sheets will be added soon.



[Transferable  
Development  
Rights](#) [.pdf](#)



[Overlay Zones for  
Climate Resilience](#) [.pdf](#)



[Reducing Parking  
Minimums](#)



[Tree Protections  
Landscape Standards](#)



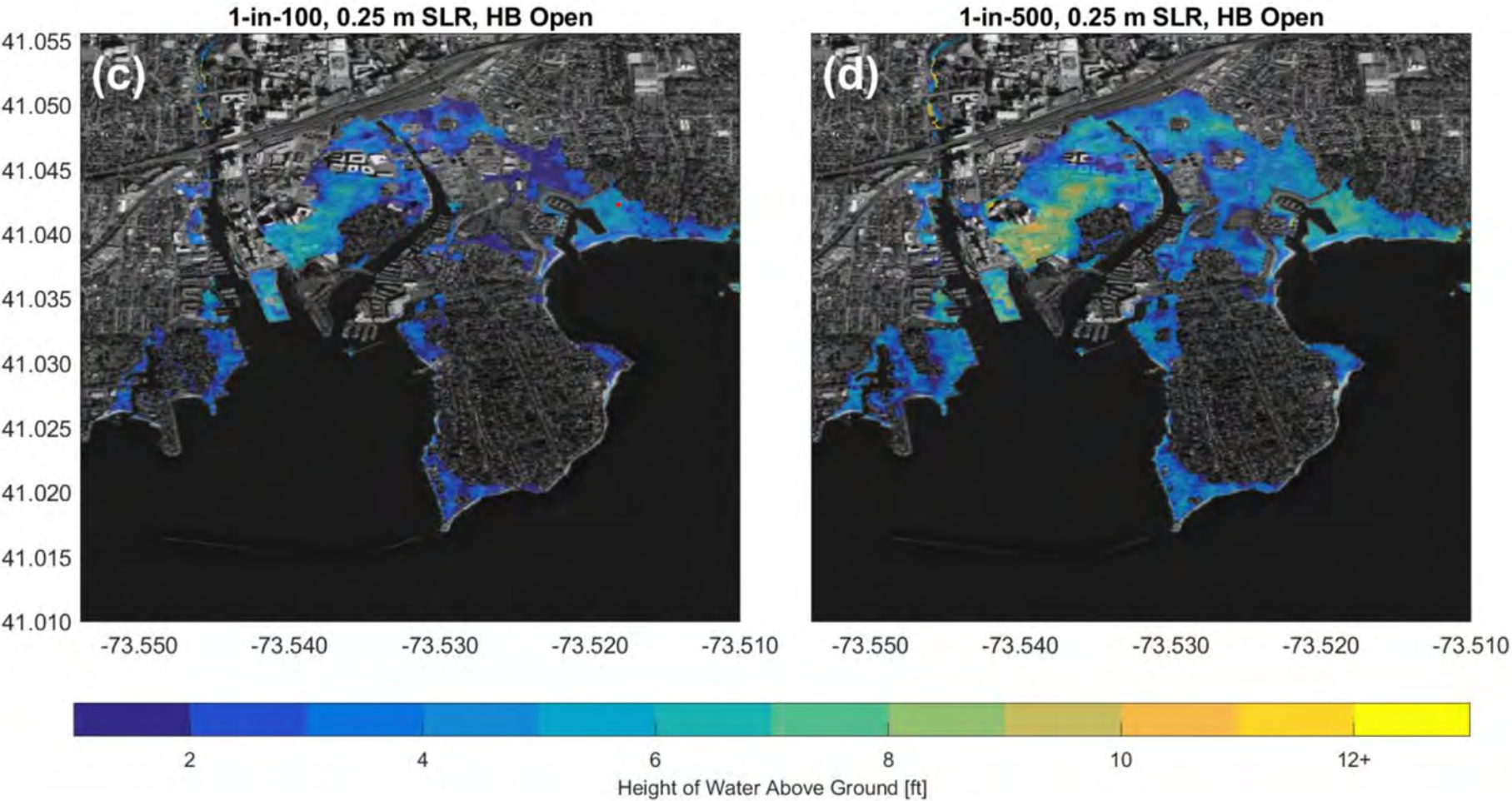
[Minimum Lot Size  
Reductions](#) [.pdf](#)



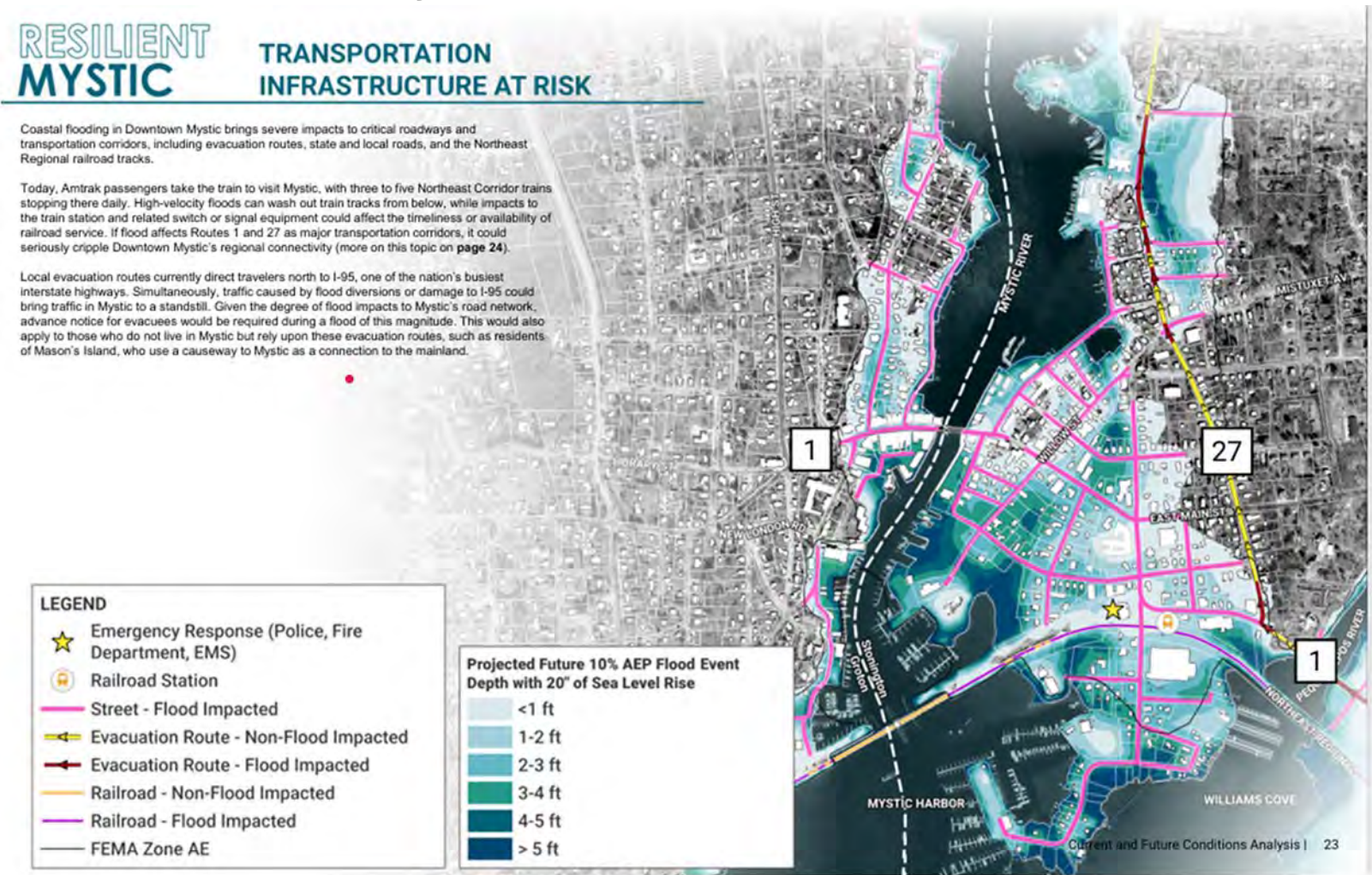
[Maximum Lot  
Coverage](#) [.pdf](#)



Other Projects: (1) Stamford Future Flood Vulnerability



# Other Projects: (2) Mystic Future Flood Vulnerability





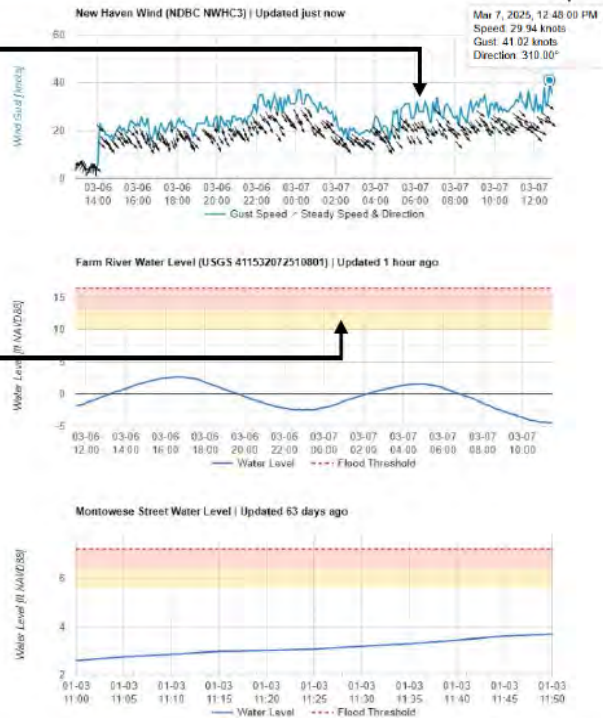
# Other Projects: (3) Flood Sensors Demonstration

## CIRCA Severe Weather Monitoring - Branford

Near-Real-Time Wind & Flood Data for Branford

Winter Weather Advisory  
1/16/2025 04:05 EST through 1/17/2025 04:00 EST  
Winter Weather Advisory issued January 16 at 4:05AM EST until January 17 at 4:00AM EST by NWS Upton New York NY

- **WHAT:** Snow expected. Total snow accumulations between 1 and 3 inches. Localized higher amounts possible in banding.
- **WHERE:** Portions of south-eastern New York and western Connecticut.
- **WHEN:** Until 4 AM EST Friday
- **IMPACTS:** Plan on slippery road conditions. The hazardous conditions could impact the Thursday morning and evening commutes.



Back to Site Selection

Use metric units ☐



Units default to knots, ft but can be toggled to metric.

Graphs can be queried by hovering over them with cursor

Predicted tide forecast overlaid on measured water level plots where applicable

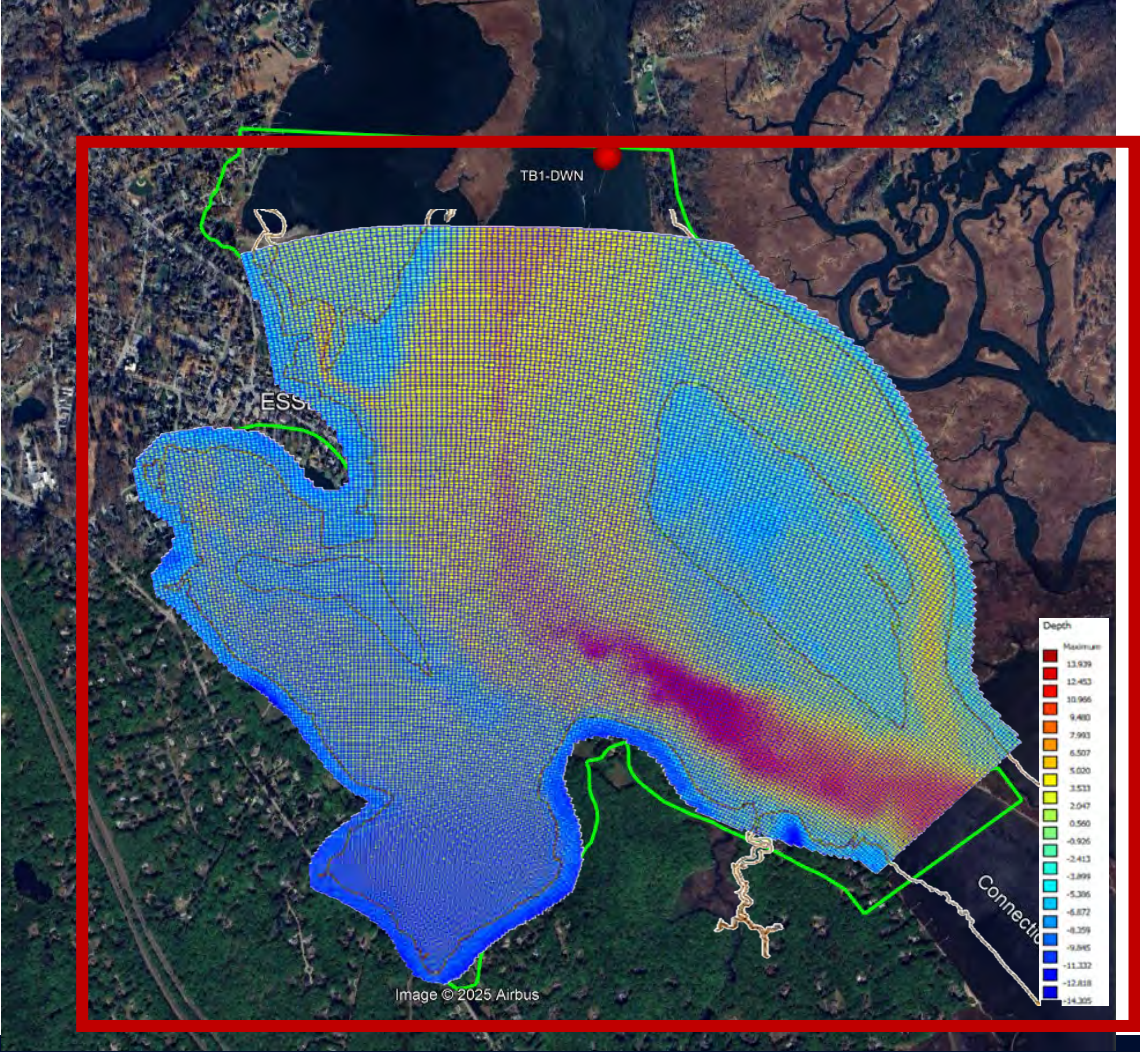


Stamford, CT June 2024

UConn CIRCA 2025 | Contact: [circa@uconn.edu](mailto:circa@uconn.edu)



Other Projects: (4) Thatchbed Island Erosion



## Other Projects: (5) Climate and Equity 2024 Grant Program

Support from CT DEEP (with RGGI funds)

- **Alliance for the Mystic River Watershed** (Eastern Pequot Tribal Nation, Groton, Ledyard, Mashantucket Pequot Tribal Nation, North Stonington, Stonington) Develop a Community Resilience Advisory Group,
- **Connecticut Roundtable on Climate and Jobs** (Bridgeport): Advance EmpowerED initiative for climate resilience and community trust-building.
- **Make the Road Connecticut** (Hartford, Bridgeport): Staff training on climate intersection with health, housing, and education justice.
- **New Haven Leon Sister City Project** (New Haven): Funding for a youth campaign called DeCARbonize the Oceans engagement
- **Northeast Neighborhood Partners Inc. / North Hartford Partnership** (Hartford): . Develop a process for donating compost to local farms and community gardens.
- **Radical Advocates for Cross-Cultural Education / RACCE** (Waterbury): Expand project to deploy a network of air quality monitoring devices in Waterbury,



# Science/Technical Publications

- Onat, Y., N. Govert, M. Buchanan, D. Murphy, M. McGaffin, C. Dickes, L. Duskin, V. Vetre, J. Truscinski, and J. O'Donnell (2025). **Development of a Statewide Climate Change Vulnerability Index for Heat and Flood: A Comprehensive Assessment of Connecticut for Resiliency Planning**. *Geographies* (2025), 5(3), 28; <https://doi.org/10.3390/geographies5030028>
- Onat, Y, M. Buchanan, L. Duskin, C. Massidda, J. O'Donnell (2025) **A State-Specific Approach for Visualizing Overburdened Communities: Lessons from the Connecticut Environmental Justice Screening Tool 2.0**. *Sustainability* 17 (10), 4535. <https://doi.org/10.3390/su17104535>
- Zheng Ren, Nalini Ravishanker, Marc de Vos, Namitha Viona Pais, Rohan Chhatre, James O'Donnell (2025) **Attention-Based Ensemble Learning for Hindcasting Significant Wave Heights and Estimating Extreme Return Levels**, *Ocean Engineering* (in Press)
- Zavell, M.D., M.E.P. Moulund, D. F. Barnum, Z. Chen, S. Siedlecki, J. O'Donnell, M. De Vos, C.M. Matassa, E.T. Schultz, and H. Baumann. (2025) **Experiments and ocean models predict diminishing benefits of offshore overwinter in northern stock black sea bass (*Centropristis striata*)**. *Mar. Ecol. Prog. Ser.* (In Review)
- Zheng Ren, Marc de Vos, Nalini Ravishanker, Namitha Viona Pais, James O'Donnell, (2025) **Systematic Evaluation and Enhancement of Significant Wave Height Forecasting Using Attention-Based LSTM Networks and Model Optimization**, *Ocean Modelling* (submitted)
- Zheng Ren, Marc de Vos, Nalini Ravishanker, Namitha Viona Pais, James O'Donnell, (2025) **Noise-Augmented and Probabilistic Deep Learning for Significant Wave Height Forecasting with Attention-Based LSTM Models**. Submitted to *Applied Ocean Research*
- de Vos, M, Y. Onat a and J. O'Donnell (2025) **Tide-surge interactions in an estuary: a case study in Long Island Sound**, *Cont. Shelf Research* (submitted)
- de Vos, M, Y. Onat and J. O'Donnell (2025) **Evaluation of high-resolution downscaled CMIP6 projections for adaptation to climate extremes in Connecticut**. *Climate Services* (submitted)

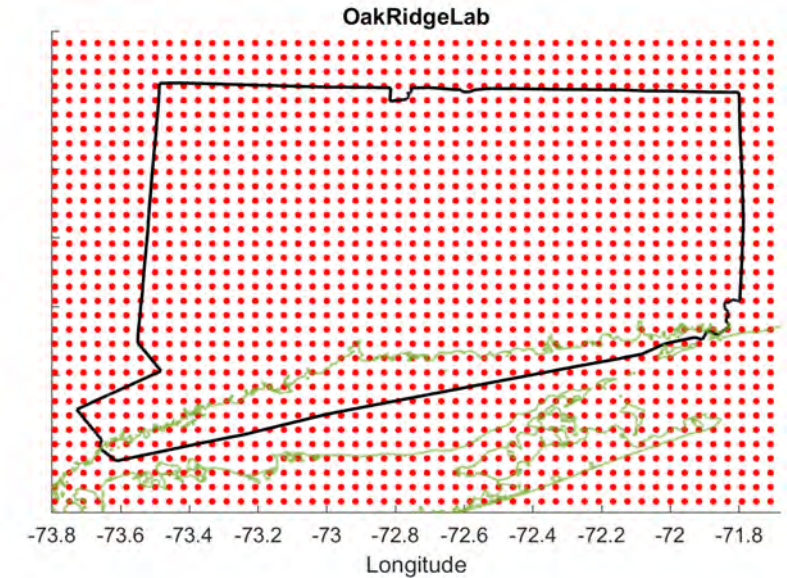
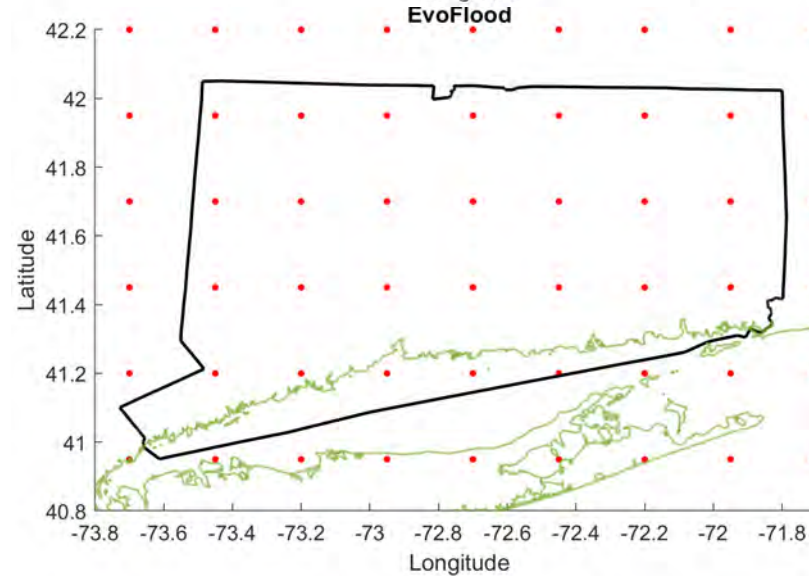
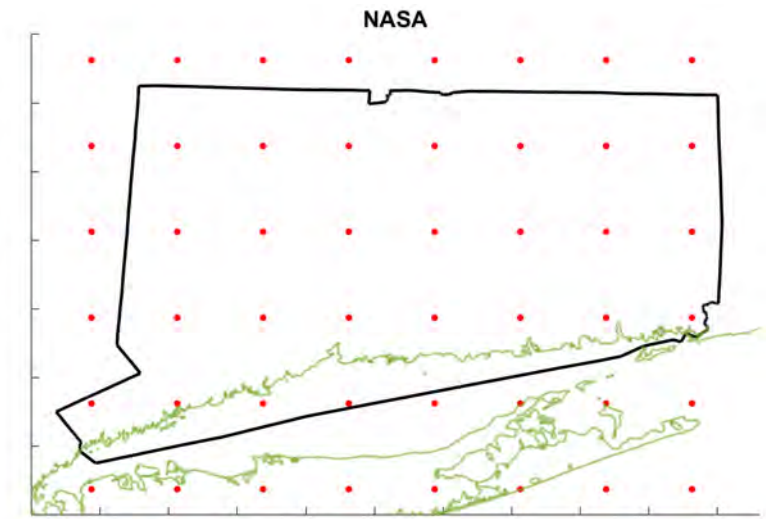
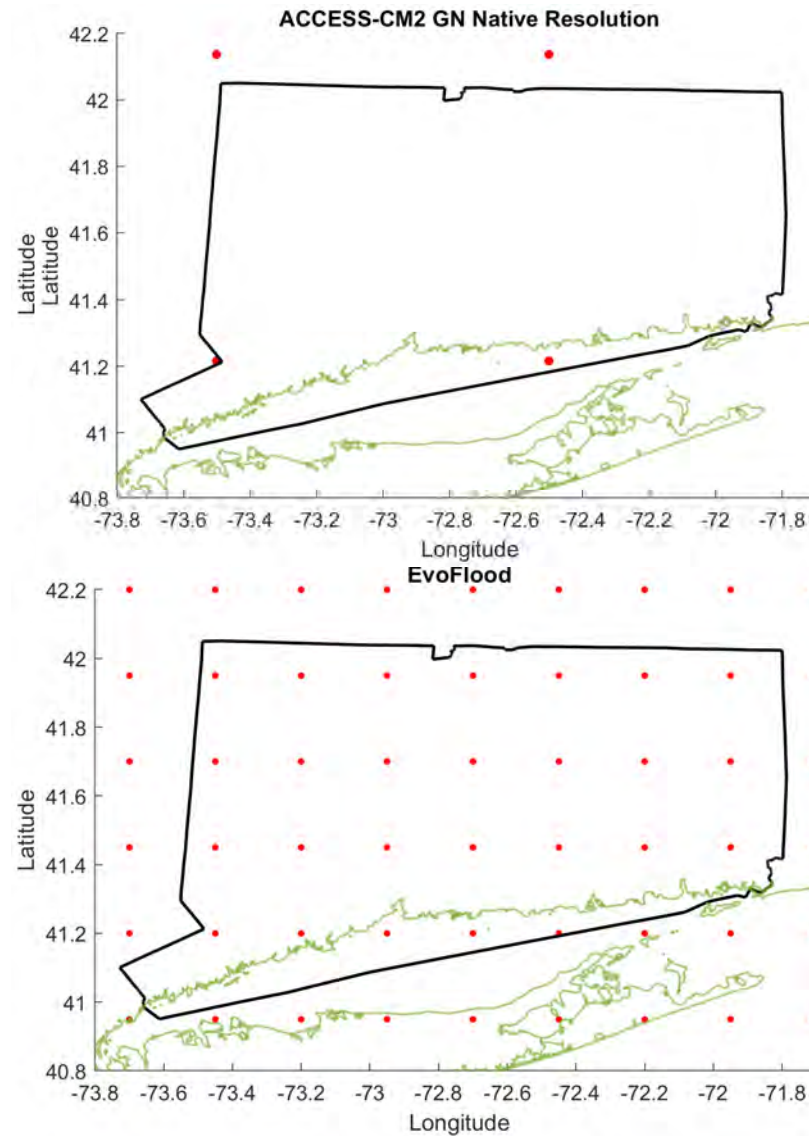
# “Localizing” Climate Projections

Avg. horizontal resolution in CMIP6 models  $\sim 1^\circ$  (110 km, 70 mi)

(Probably) too low for local planning

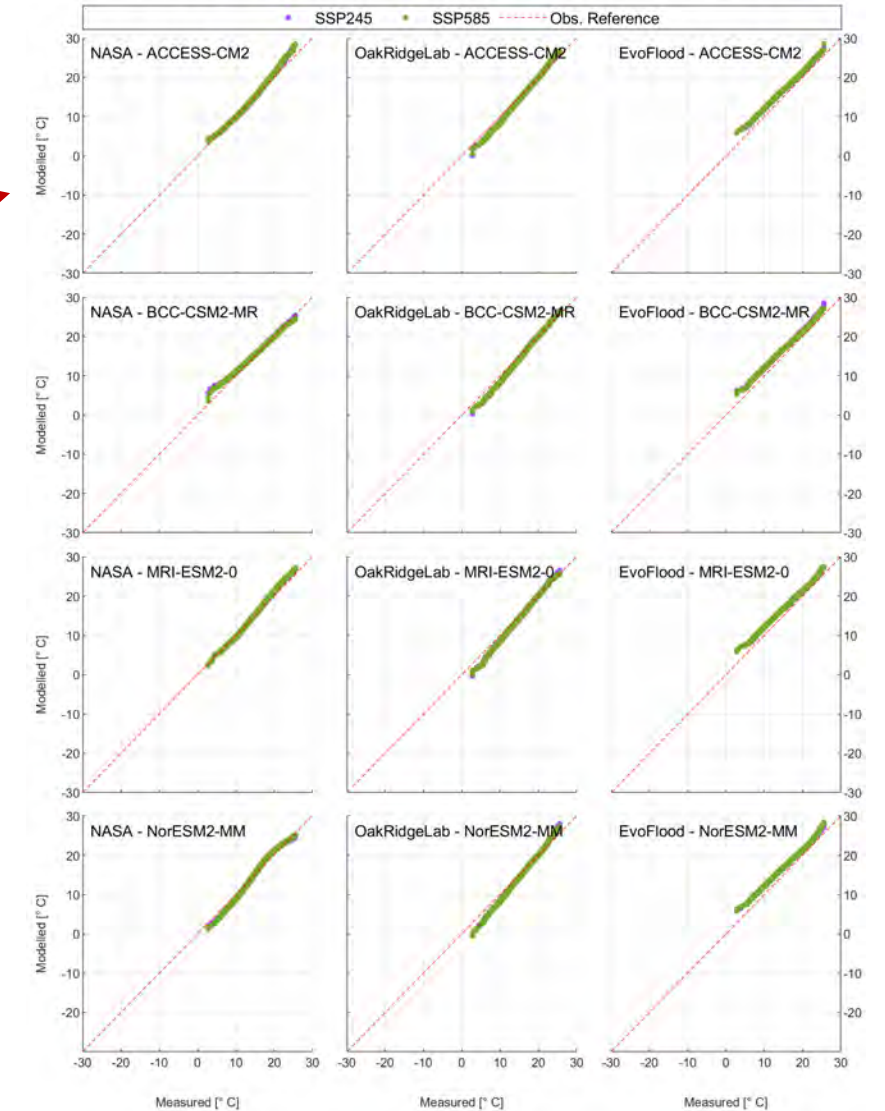
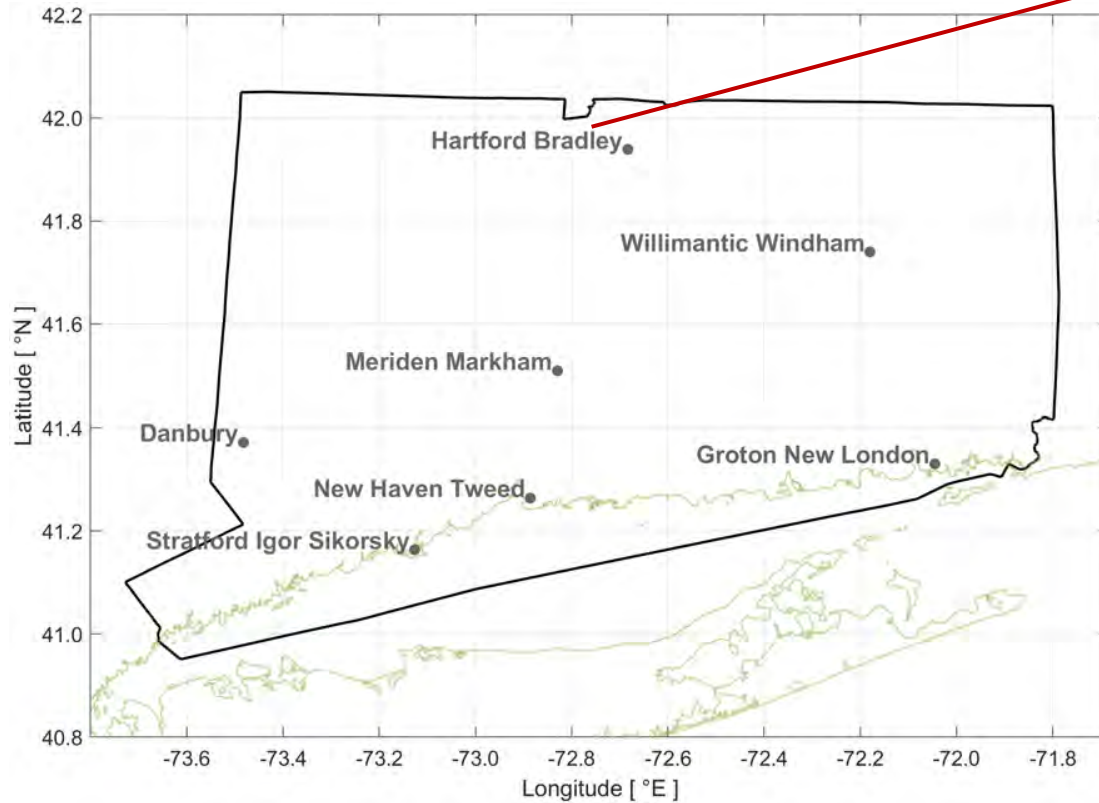
Downscaling: increasing resolution of GCMs

- Dynamically
- Statistically



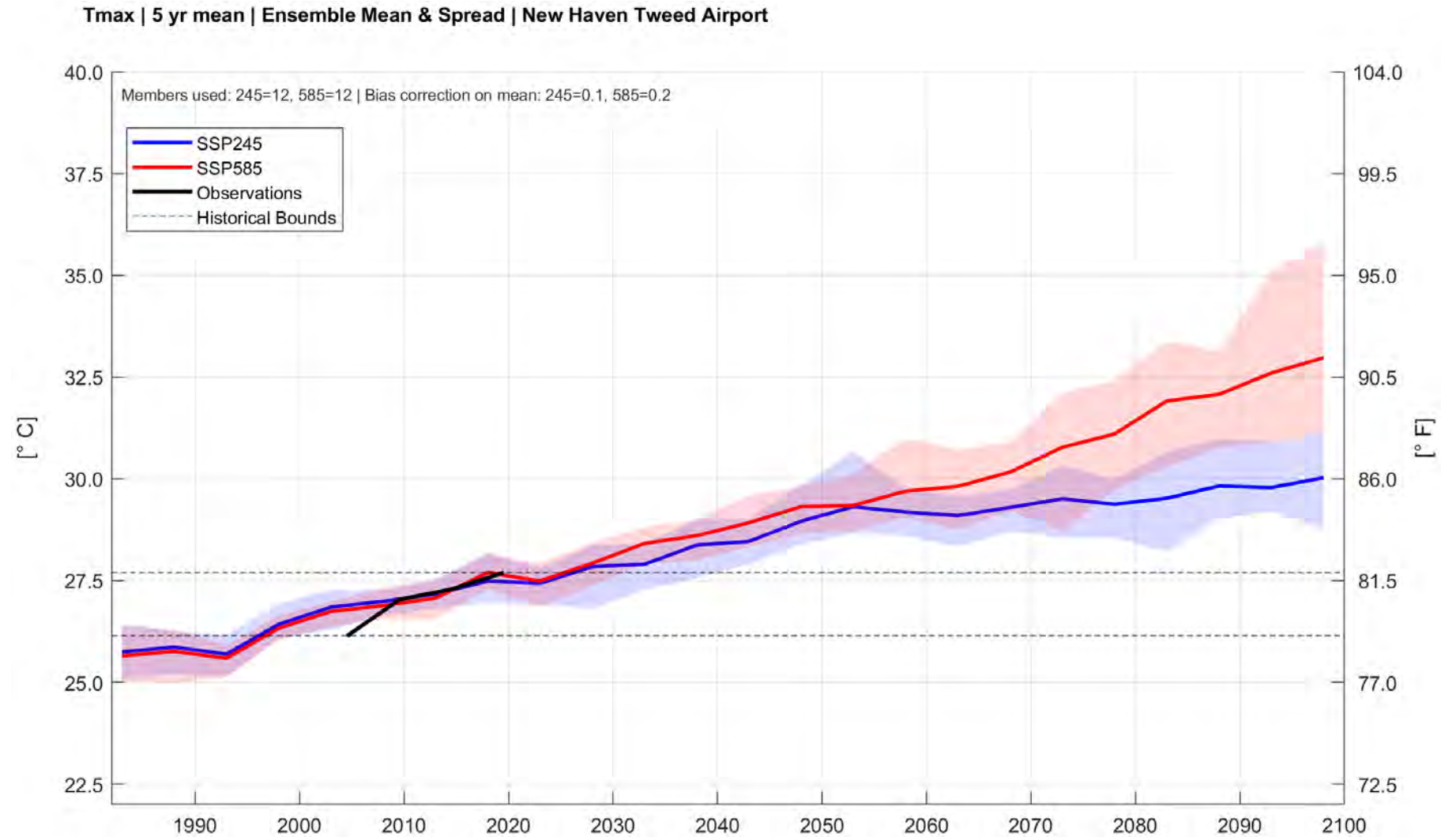


# How reliable are climate projections of *extremes* in Connecticut?



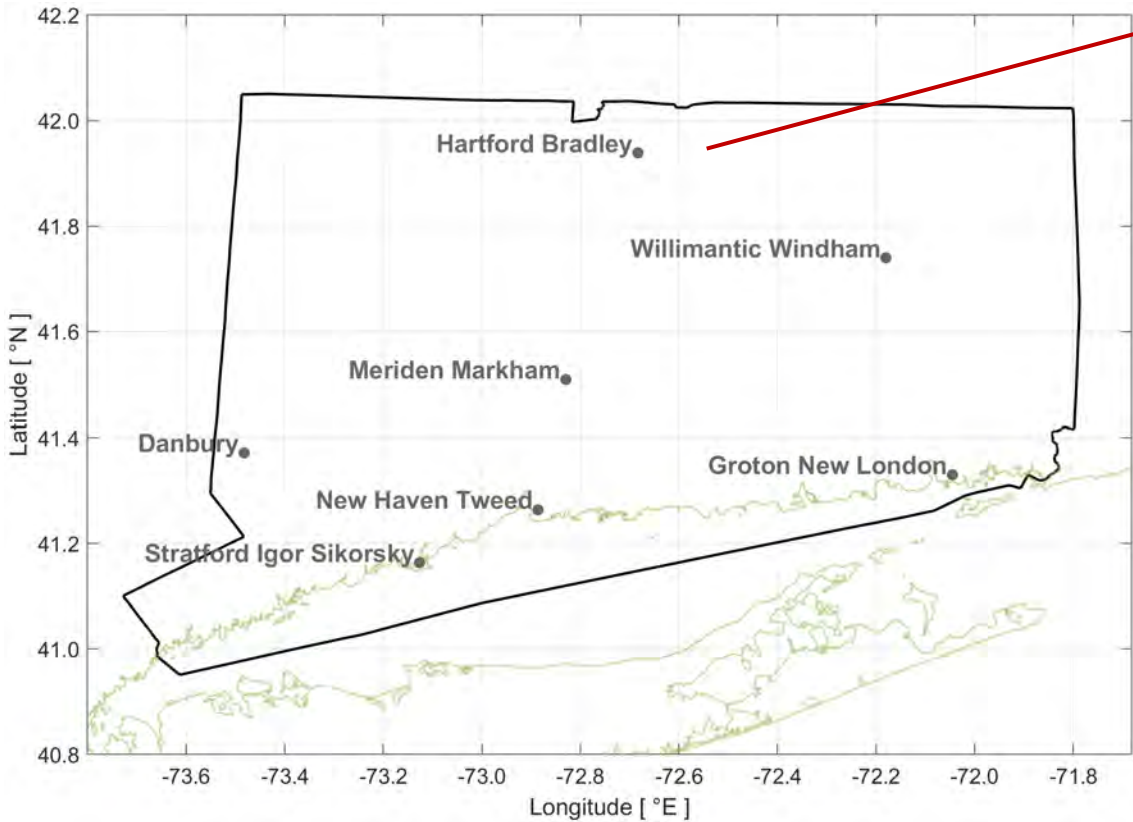
# Long term means

(reliable ensemble members)

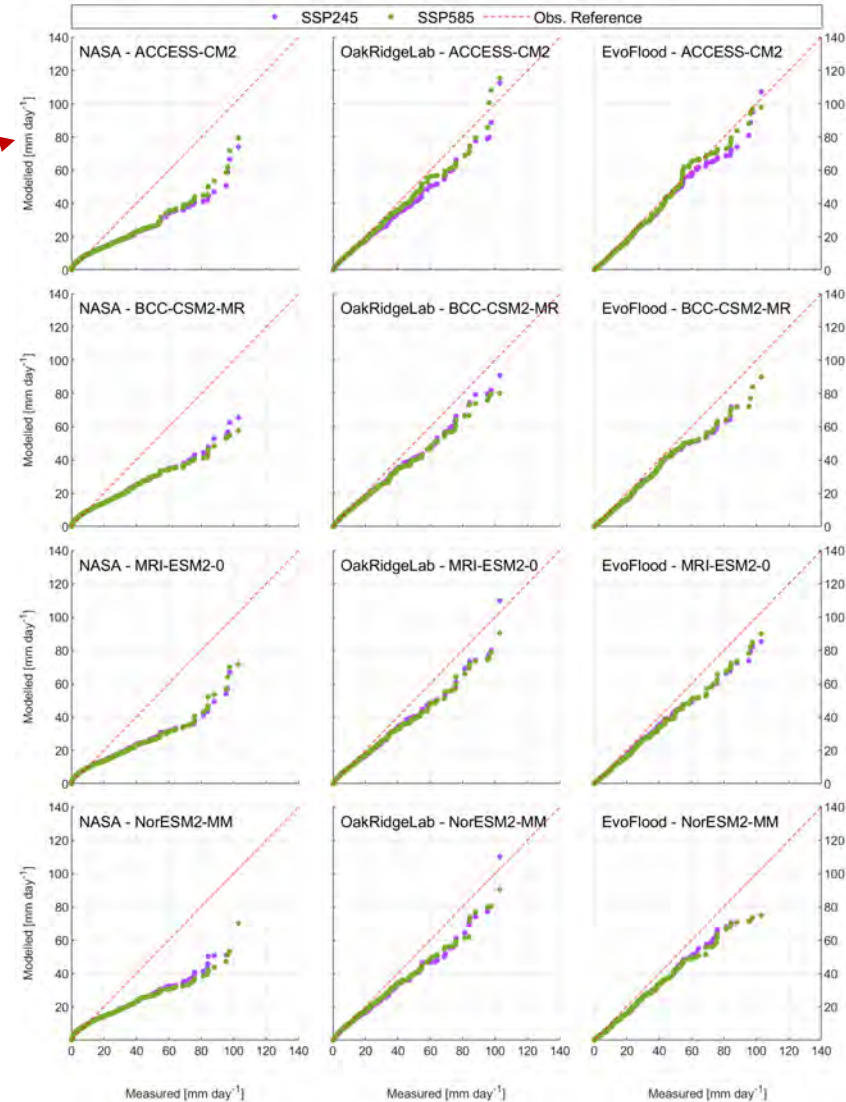




# How reliable are climate projections of extremes in Connecticut?



Variable: precip, Site: Hartford\_Bradley\_Airport  
Model vs. obs. comparison period: 1981-06-01 to 2024-08-31, = 43.25 yrs. Files: jja\_airports\_1D.mat, LCD\_USW00014740\_jja.mat, Season: summer



# How reliable are climate projections of *extremes* in Connecticut?

Maximum daily temperatures: **mixed reliability**

Minimum daily temperatures : **high reliability**

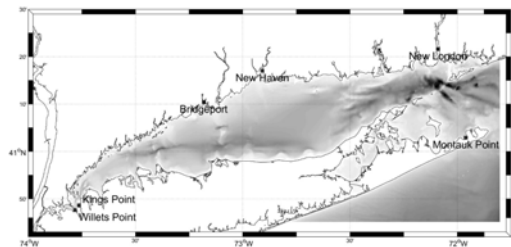
Daily average wind speeds: **mixed reliability**

Daily average precipitation: **low reliability**

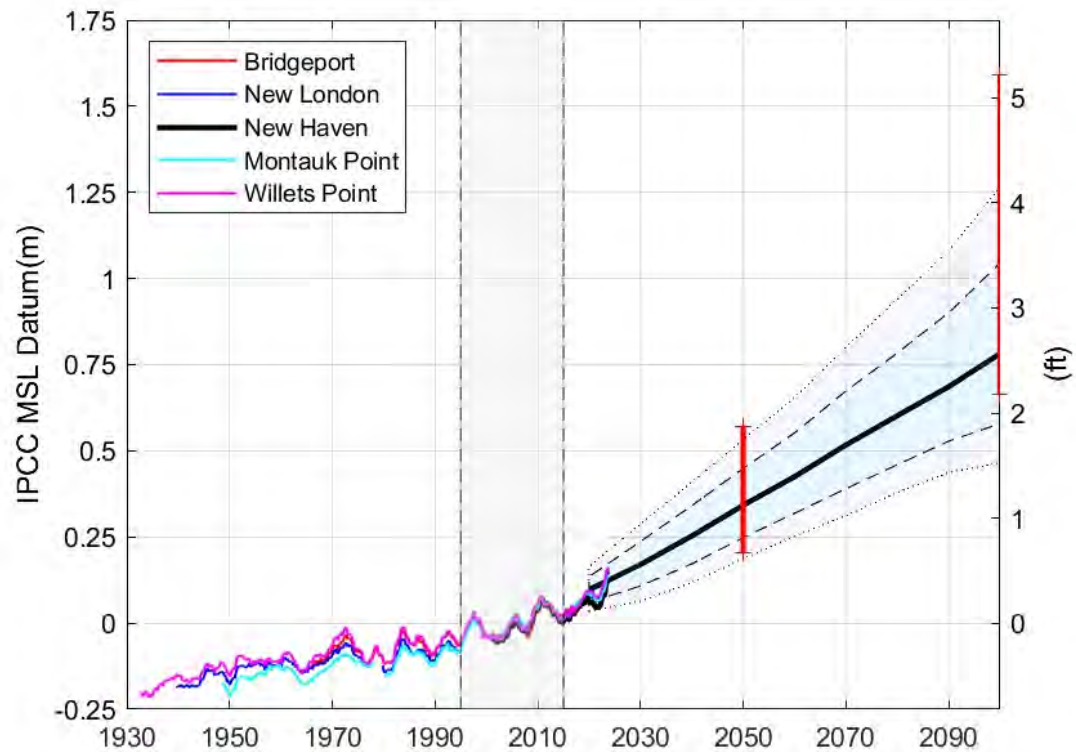
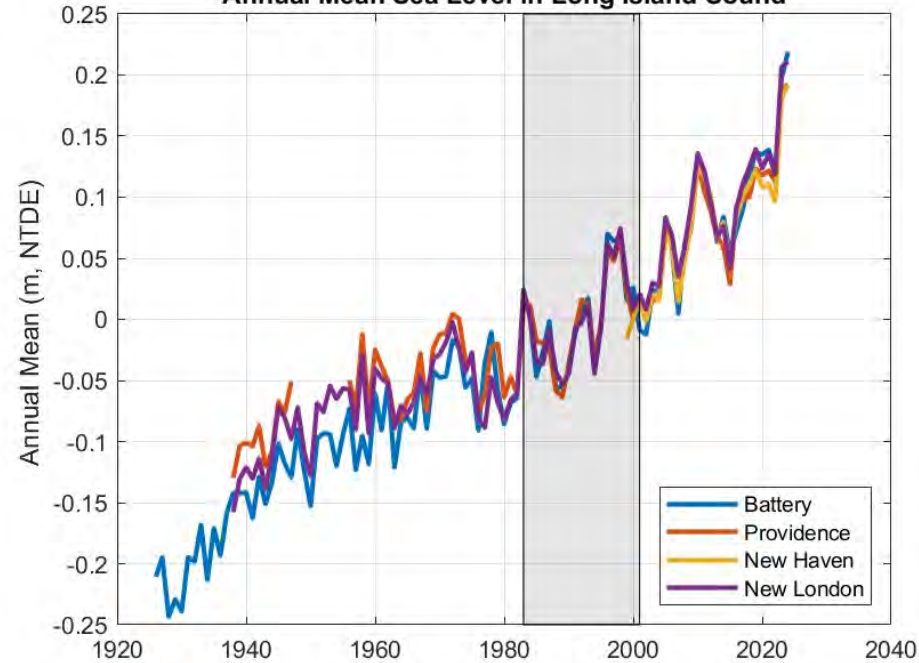
Relative humidity: **inconclusive**



# Updated Mean Sea Level Observations and Predictions for Connecticut?



Annual Mean Sea Level in Long Island Sound



## What's Next?

1. Resilient Connecticut in Northeast and Northwest
2. Review Resilient Connecticut 1.0 projects to assess potential for effective interventions
3. CT FLOOD Alert Network
4. Continue engagement with EJ community groups
5. Develop workforce training and standards
6. Assist municipalities in the FEMA and CT DEEP funding competitions.